



How to Determine What Intel® Optane™ Memory Technology is in Your System

Last Reviewed: 23-Mar-2018

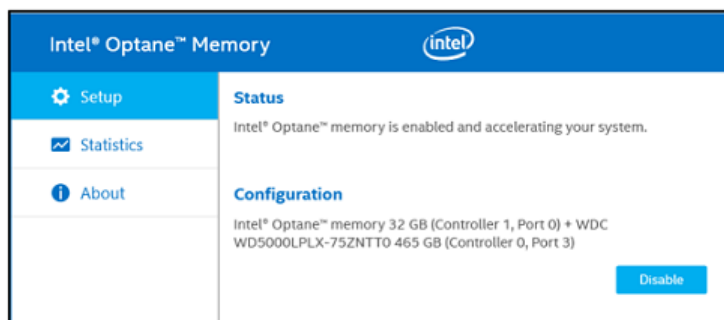
Article ID: 000023990

If you purchased an Intel® Optane™ Memory Ready system that came with the module installed and potentially enabled for system acceleration, you can use this article to determine what Intel® Optane™ Memory technology is in your system and the status.

Intel® Optane™ Memory User Interface

Note	If there is no device in the system, this section will state that it has not detected a device in the system.
-------------	---

- How to get there:
 1. Press the **Windows Key**.
 2. View all applications.
 3. Select **Intel® Optane™ Memory** (might be in an Intel brand folder).
 1. If this application is not listed, look in the same location for the Intel® Rapid Storage Technology application.
- Where to look: Setup tab.



Intel® Rapid Storage Technology User Interface

- How to get there:
 1. Press the **Windows Key**.
 2. View all applications.
 3. Select **Intel® Rapid Storage Technology** (might be in an Intel brand folder).
- Where to look: Right column in the Status, *Manage* or *Intel® Optane™ Memory* sections.

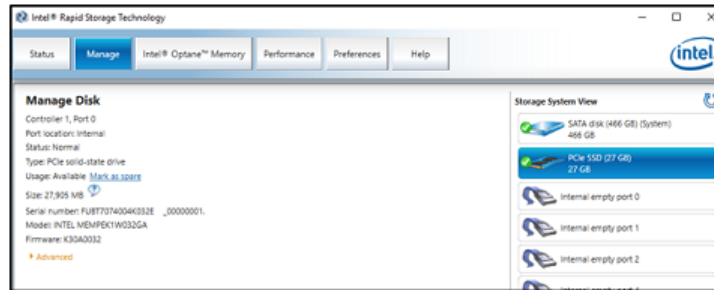


Figure 1

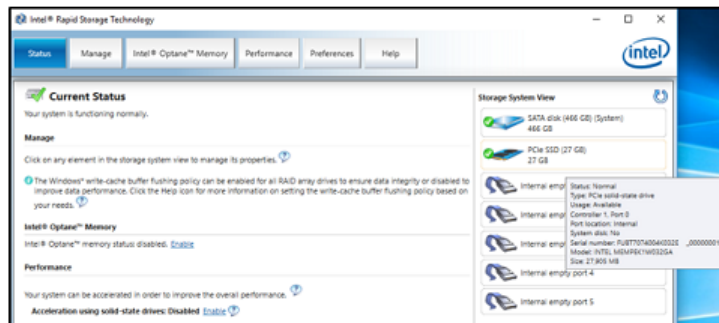


Figure 2

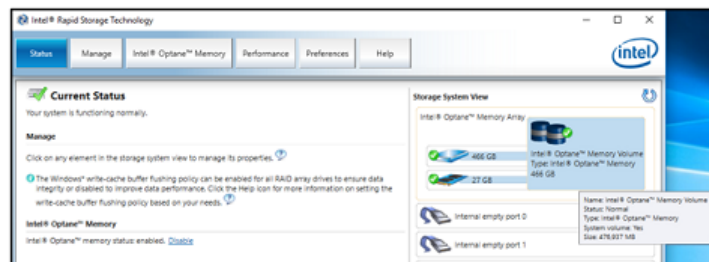


Figure 3

1. **Figure 1 and 2:** These figures show the Intel® Optane™ Memory device as a standalone device and Not Enabled for System Acceleration.
2. **Figure 3:** This figure shows the Intel® Optane™ Memory device as a Storage Volume, Enabled for System Acceleration.

Device Manager

- How to get there:
 1. **Windows Key + X,**
 2. search for and select **Device Manager.**
- Where to look: Disk Drives.

Note	If you do not see the Intel® Optane™ memory module as seen in the images below <ol style="list-style-type: none"> 1. You may have to install the Intel® Rapid Storage Technology (Intel® RST) driver. 2. Initialize the device in Disk Management.
-------------	--

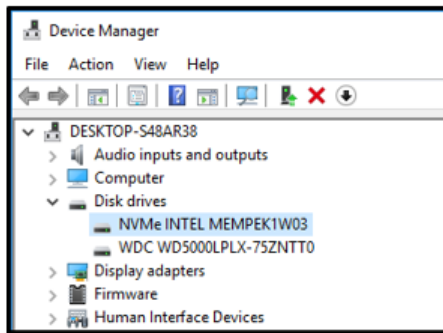


Figure 1

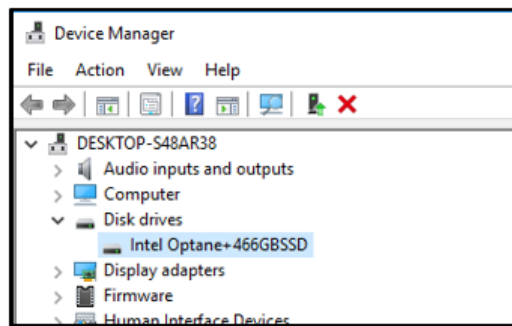


Figure 2

Figure 1: This figure shows the Intel® Optane™ Memory device as a standalone device and not enabled for system acceleration.

Figure 2: This figure shows the Intel® Optane™ Memory device as a storage volume, enabled for system acceleration. If you want to see the more about this volume, right-click the volume and select **Properties**.

How to Determine System Acceleration is Active with Intel® Optane™ Memory

Last Reviewed: 23-Aug-2017

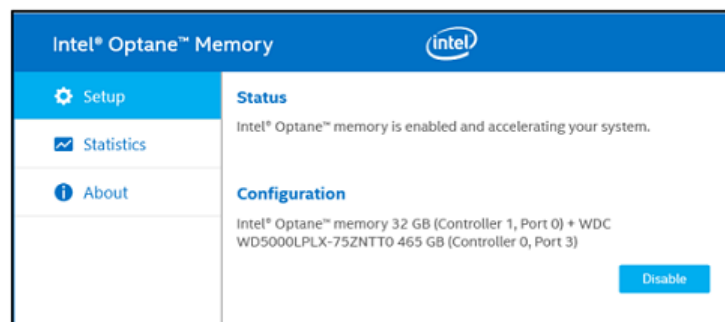
Article ID: 000023991

Use one of the methods below to determine if Intel® Optane™ Memory is actively accelerating your system.

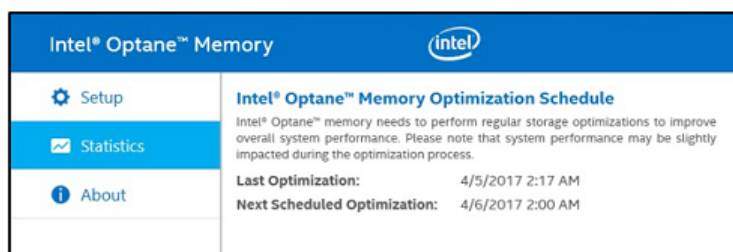
Intel® Optane™ Memory User Interface

- How to get there:
 1. Select the **Windows Key**.
 2. View all applications.
 3. Select **Intel® Optane™ Memory** (might be in an Intel folder).
- Where to look:

Intel® Optane™ Memory (16GB) - Setup Tab Volume Enabled



Intel® Optane™ Memory (32GB or larger) - Statistics Tab Volume Enabled and showing last optimization run



Intel® Rapid Storage Technology User Interface

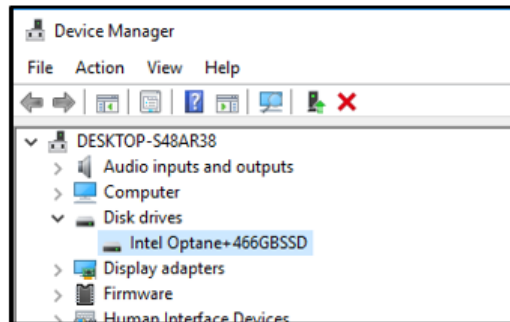
- How to get there:
 1. Select the **Windows Key**.
 2. View all applications.
 3. Select **Intel® Rapid Storage Technology** (might be in an Intel folder).

- Where to look: Right column in the Status, *Manage* or *Intel® Optane™ Memory* sections.



Device Manager

- How to get there: **Windows Key + X** then search for and select **Device Manager**.
- Where to look: Disk Drives.



The Device Manager shows the Intel® Optane™ Memory module as a storage volume, enabled for system acceleration. It shows the Intel® Optane™ volume is accelerating the drive noted in the name of the disk (that is, Intel Optane + SATA disk).

Right-click the volume and select **Properties** to see more details about the volume.

Windows Scheduler* (Only available for Intel® Optane™ Memory Series 32GB and greater in capacity)

- How to get there:
 - Press the **Windows** and **X** keys.
 - Select **Computer Management**.
 - Expand **System Tools**.
 - Expand **Task Scheduler**.
 - Expand the **Task Scheduler Library** folder.
 - Click the **Intel** folder.
- Where to look: Under the *Intel® Optane™ Memory* task.

