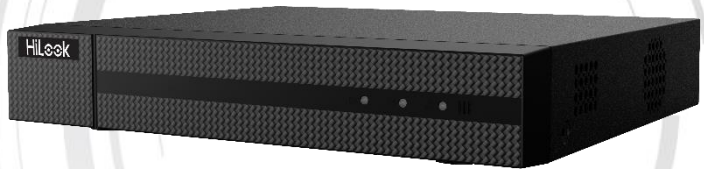


NVR-104MH-D/4P and NVR-108MH-D/8P SERIES NVR



Features and Functions

Video Input and Transmission

- Connectable to the third-party network cameras
- Up to 8 network cameras can be connected

Compression and Recording

- H.265+/H.265 compression effectively reduces the storage space and costs
- Full channel recording at up to 4 MP resolution

HD Video Output

- HDMI/VGA output at 1080p resolution

Storage and Playback

- 1-ch playback at 4 MP resolution or 2-ch at 1080p resolution
- 1 SATA hard disk can be connected with 6TB capacity

Smart Function

- Supports line crossing and intrusion detection
- Smart search for the selected area in the video; and smart playback to improve the playback efficiency
- One-key operation: automatically search, modify and add IP cameras after device is activated

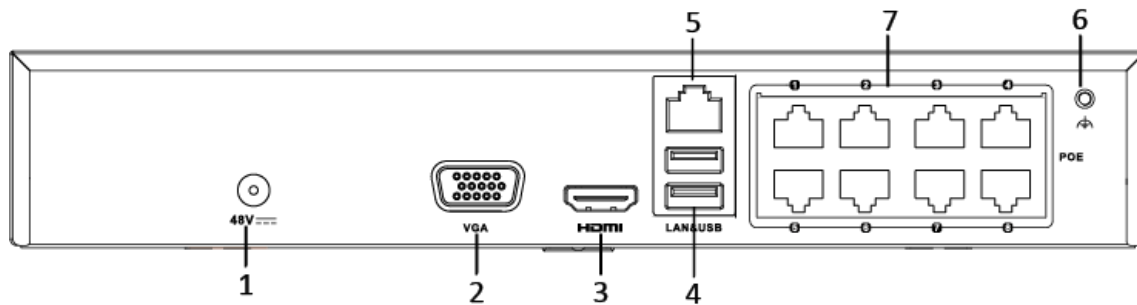
Network & Ethernet Access

- Hik-Connect for easy network management
- 100 Mbps Ethernet network interface
- 4/8 independent 100 Mbps built-in switch network interfaces

Specifications

Model		NVR-104MH-D/4P	NVR-108MH-D/8P
Video input	IP video input	4-ch	8-ch
		Up to 4 MP resolution	
Network	Incoming bandwidth	40 Mbps	60 Mbps
	Outgoing bandwidth	60 Mbps	
Video output	Recording resolution	4 MP/3 MP/1080p/UXGA /720p/VGA/4CIF/DCIF/ 2CIF/CIF/QCIF	
	HDMI/VGA output resolution	1920 × 1080p/60Hz, 1280 × 1024/60Hz, 1280 × 720/60Hz, 1024 × 768/60Hz	
Decoding	Decoding format	H.265+/H.265/ H.264+/H.264	
	Live view/Playback resolution	4 MP/3 MP/1080p/UXGA /720p/VGA/4CIF/DCIF/ 2CIF/CIF/QCIF	
	Synchronous playback	4-ch	8-ch
	Capability	1-ch @ 4 MP / 2-ch @ 1080p	
Hard disk	SATA	1 SATA interface	
	Capacity	Up to 6TB capacity for each disk	
Network management	Network protocols	TCP/IP, DHCP, Hik-Connect, DNS, DDNS, NTP, SADP, SMTP, UPnP TM	
External interface	Network interface	1, RJ-45 10/100Mbps self-adaptive Ethernet interface	
	USB interface	2 × USB 2.0	
POE Interface	Interface	4, RJ-45 10/100 Mbps self-adaptive Ethernet interface	8, RJ-45 10/100 Mbps self-adaptive Ethernet interface
	Power	≤ 36W	≤ 75W
	Standard	IEEE 802.3 af/at	
General	Power supply	48 VDC	
	Power	≤ 50 W	≤ 90 W
	Consumption (without hard disk and PoE)	≤ 10 W	
	Working temperature	-10 to +55° C (+14 to +131° F)	
	Working humidity	10 % to 90 %	
	Chassis	1U chassis	
	Dimensions (W × D × H)	260 × 225 × 48 mm (10.2" × 8.9" × 1.9")	
	Weight (without hard disk)	≤ 1 kg (2.2 lb)	

Physical Interfaces



Index	Name	Index	Name
1	Power Supply	5	LAN Network Interface
2	VGA Interface	6	Ground
3	HDMI Interface	7	Network Interfaces with PoE function (4 interfaces for DS- NVR-104MH-D/4P and 8 interfaces for NVR-108MH-D/8P)
4	USB Interface		

Available Models

NVR-104MH-D/4P, NVR-108MH-D/8P