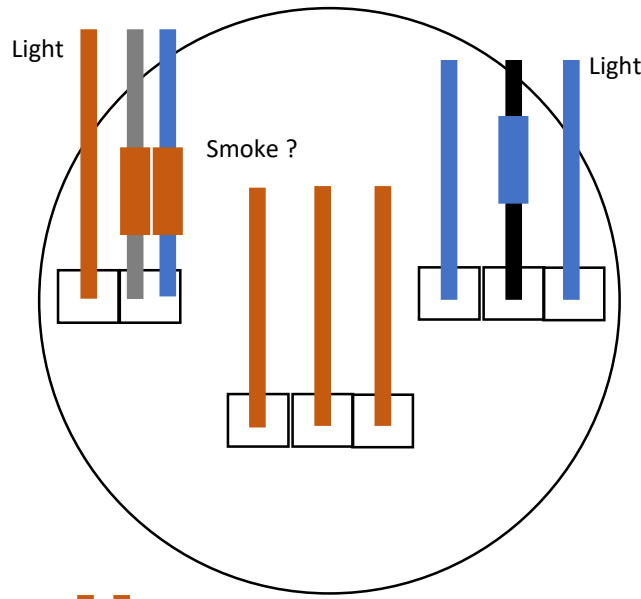
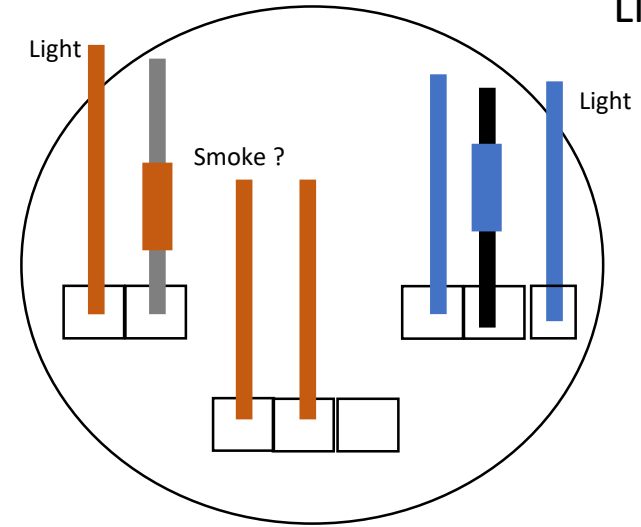


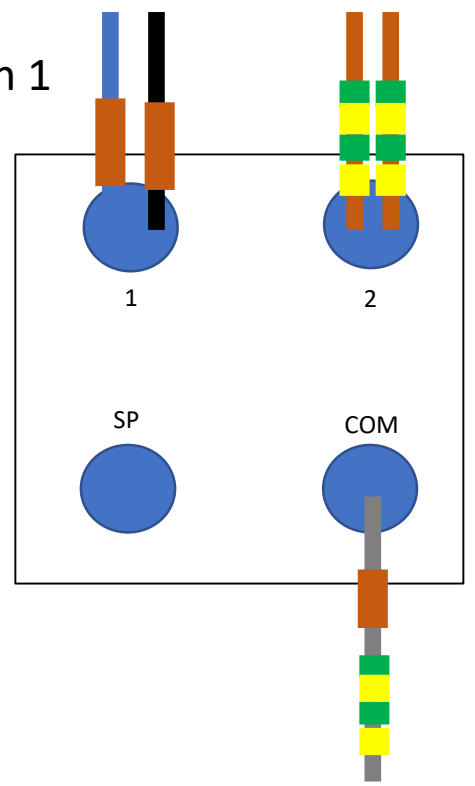
Light 1



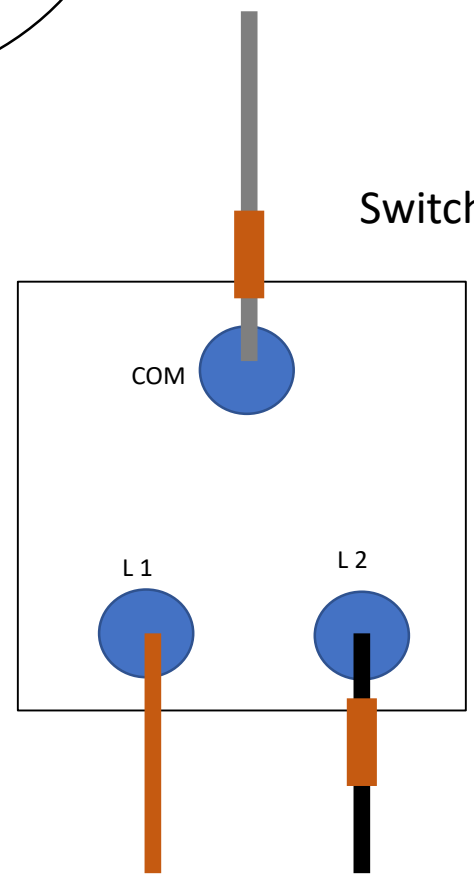
Light 2



Switch 1

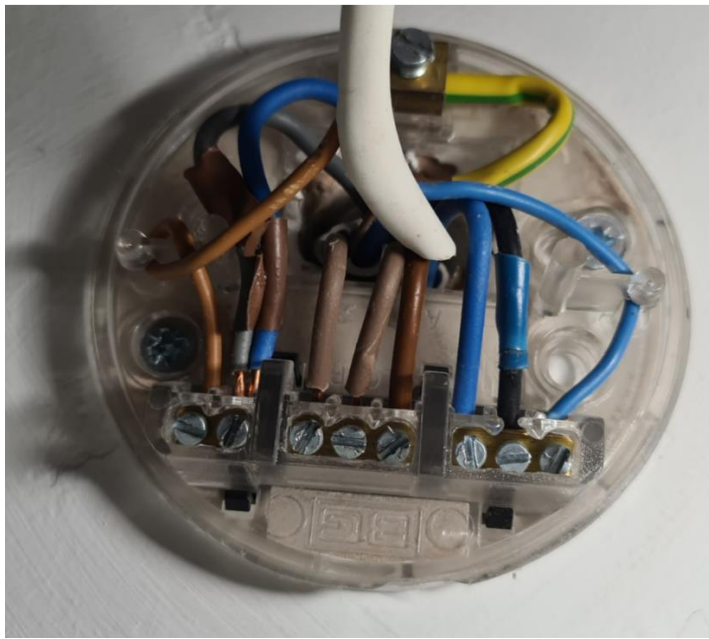


Switch 2

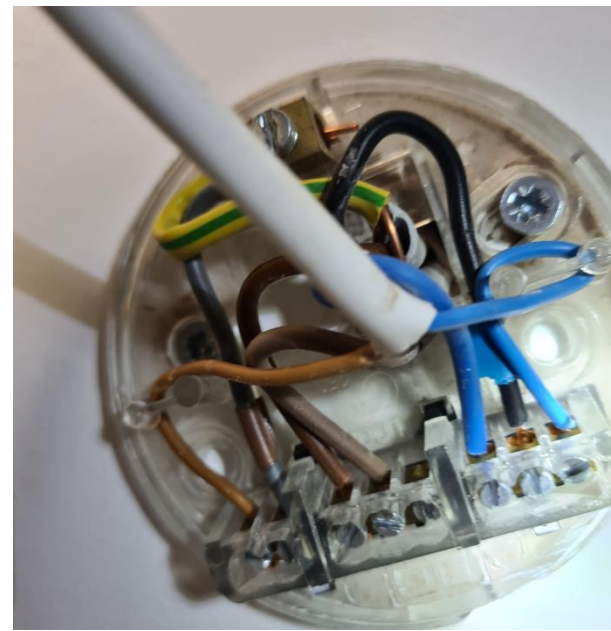


WANT TO SEPARATE LIGHT 1 & SWITCH 1 FROM LIGHT 2 & SWITCH 2

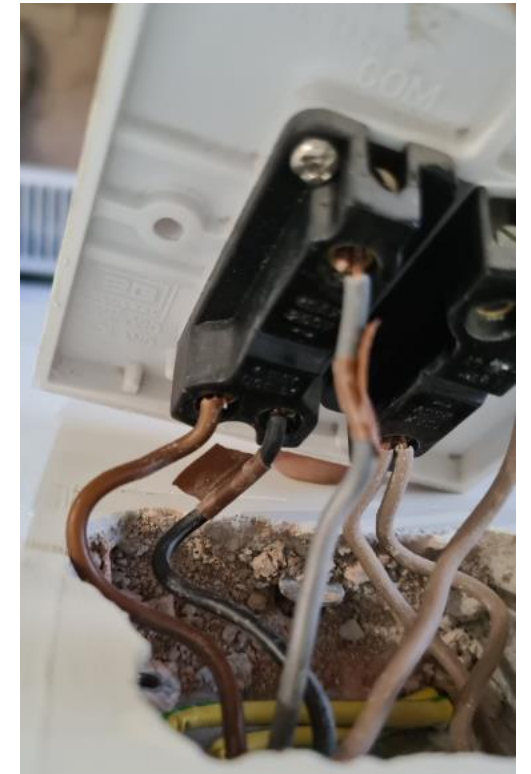
Light 1



Light 2



Switch 2



Switch 1



WANT TO SEPARATE LIGHT 1 & SWITCH 1 FROM LIGHT 2 & SWITCH 2 SO THEY BOTH WORK INDEPENDENTLY WITHOUT ANY 2 WAY SWITCHING