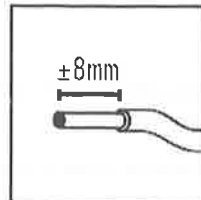
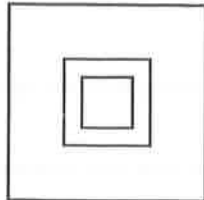
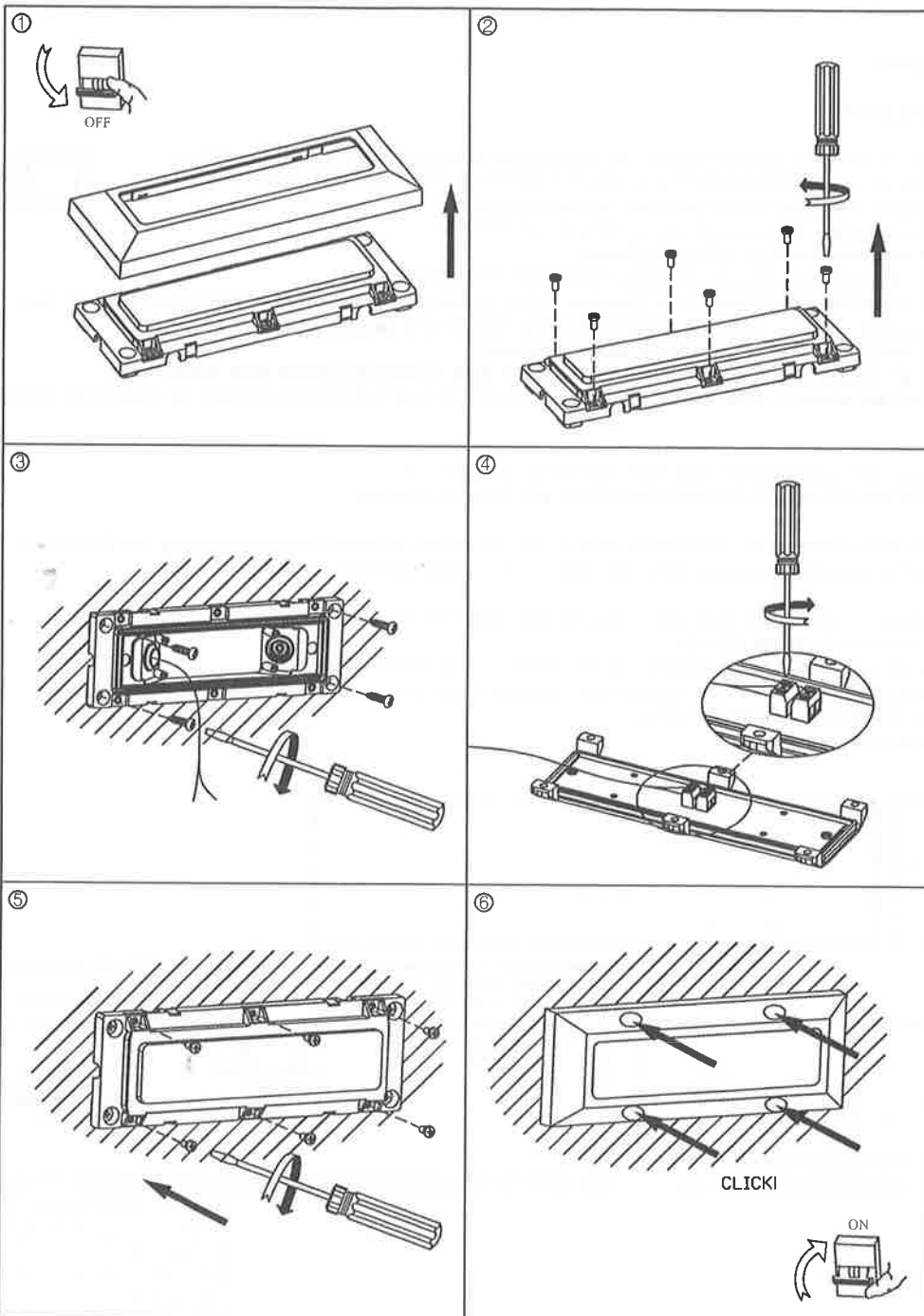




IP65



**LED
MAX.4W**



FIRSTLIGHT PRODUCTS
LIMITED
22 ERICA ROAD, STACEY
BUSHES
MILTON KEYNES
BUCKINGHAMSHIRE
ENGLAND, MK126HS

INSTALLATION INSTRUCTIONS (NON EARTHED PRODUCTS)

INSTALLATION INSTRUCTIONS

We recommend that this product is installed by a qualified electrician in accordance with the current IEE wiring regulations. Ensure that the electrical supply is switched off at the mains.

WARNING: This product MUST NOT BE EARTHED.

Ensure that the minimum distance from light to nearest subject is followed as marked on the light fitting, please see diagram below showing meaning of minimum distance symbol.

When drilling is required for fixing the product to the required surface please ensure that no pipes or cables are within the drilling area.

Please ensure that when installing a ceiling fitting, the suspension bracket supplied is screwed firmly in position to take the weight.

CONNECT THE WIRES AS FOLLOWS:

DIRECT CONNECTION TO HOUSE WIRING.

If heat sleeve is supplied with your product, please sleeve the incoming Live and Neutral supply cables.

If a terminal block & PVC Connector is supplied with the product it MUST be used on the installation.

Connect the Live (Brown/red) supply wiring to the connector block marked "L"

Connect the Neutral (Blue/black) supply wiring to connector block marked "N"

(PLEASE SEE DIAGRAM BELOW FOR DETAILS OF CONNECTION).

Ensure all connections are tight & no loose strands of wire are left out of connections.

If the supply wiring contains an earth wire this MUST be isolated correctly by use of a terminal block and at least two layers of electrical tape. Ensure that earth continuity remains for the rest of the supply wiring.

IF YOU ARE IN ANY DOUBT PLEASE CONSULT A QUALIFIED ELECTRICIAN.

ONLY MAKE TERMINAL BLOCK CONNECTIONS WITHIN THE ISOLATION BOX SUPPLIED WITH THE PRODUCT.

ALL OTHER CONNECTIONS MUST BE WITHIN THE WALL OR CEILING CAVITY AND NO CONNECTION TO EARTH IS TO BE MADE TO THE PRODUCT.

With the appropriate fixing screws (if supplied) fix the light to the wall / surface.

Please ensure that the cables do not become trapped when fixing product to surface.

Please observe the correct type and wattage of lamp being fitted. Using lamps of larger wattage and/or the incorrect style will impair the product and may make it unsafe. (Please refer to the lamp symbols on the product).

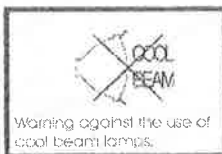
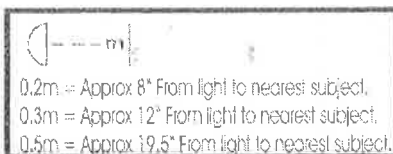
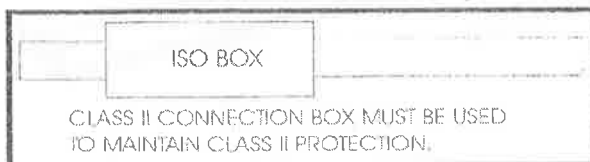
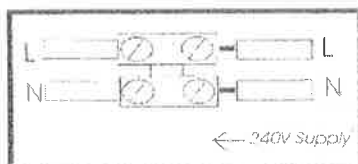
With transformer based products it is important to replace any blown lamps as soon as possible to ensure that the transformer is operating at its correct wattage output.

We do not recommend that any of our products be cleaned with polish or any abrasive cleaner.

Always ensure that the electrical supply is switched off and use a damp cloth only.

Always allow a cooling down period before touching lamps.

Keep the product away from Children and pets.



Please observe the following warning notices if present on the product (Suitable only for mounting on non-combustable surfaces), and NOT suitable for direct mounting on normally flammable surfaces.



A 8040512

Please retain these instructions for future reference.

FIRSTLIGHT PRODUCTS LIMITED
22 ERICA ROAD, STACEY BUSHES
MILTON KEYNES
BUCKINGHAMSHIRE
ENGLAND. MK126HS