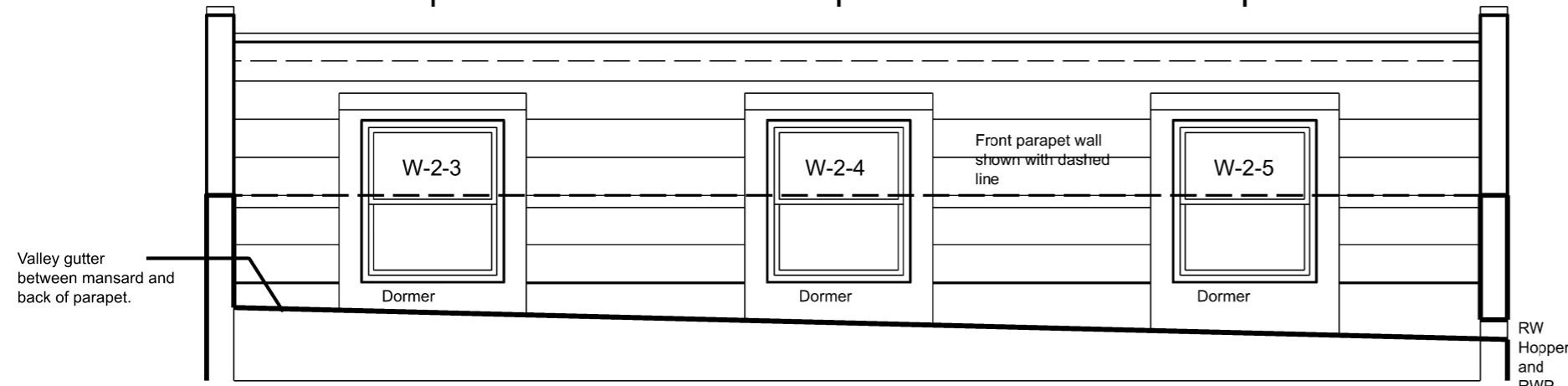
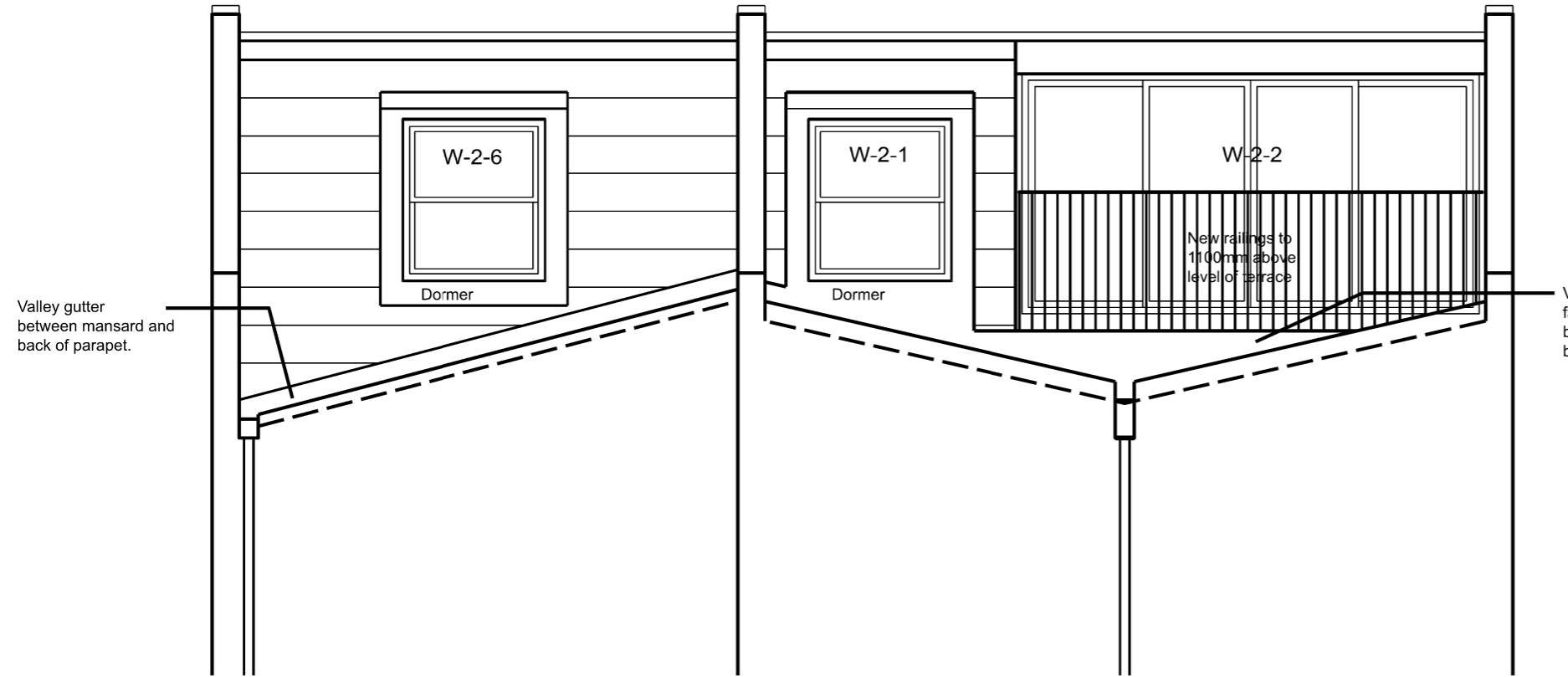


- General Notes
1. Do not scale
  2. All dimensions are shown in millimetres unless otherwise noted
  3. Refer to project based risk assessments before undertaking any work
  4. Notify the architect of any discrepancy immediately

Section CC'      Section AA'      Section BB'



Section BB'      Section AA'      Section CC'



**Specification & Performance Notes**

Refer to S/E design for steelwork, structural timber, lintels, foundations and slab design.

**New External (Brickwork) Walls**

U-Value 0.18 W/m2K or better.  
92.5mm insulated plasterboard, (EcoLiner) + Skim  
215mm brick wall, or 100mm facing brick with 100mm  
blockwork internal leaf.  
Facing brick to be of london stock to match existing.  
Refer to S/E spec for block strength, joints, ties etc.

**New Internal Floor**

30min fire separation  
min 40dB sound reduction.  
15mm 10kg/m2 dense plasterboard, tape, fill & skim  
100mm mineral flexi batt between joists  
18mm T&G flooring grade chipboard over,  
glued and screwed to receive finishes.

**Windows & Doors**

Windows to achieve U-Value of 1.2W/m2K  
Glazed Doors to achieve U-Value of 1.2W/m2K  
Opaque Doors to achieve U-Value of 1.0W/m2K  
Weather tight seals between frame and wall  
Cavity closers to perimeter  
Trickle vents to all.

**Internal Partitions**

Achieve min 30min fire resistance  
15mm 10kg/m2 dense plasterboard, tape, fill & skim  
to each side of:  
100mm timber studs to S/E spec  
Mineral or Glass quilt to cavity  
12mm ply pattressing between studs where required.  
Moisture resistant to bathrooms, wc and kitchen.

**New Internal Doors**

FD 30 Doors frames and ironmongery to all  
new doors at second floor level.

**Replacement of Internal Doors Ground & First Floor**

Replace internal doors connecting rooms to stair / hall  
at ground and first floors to become FD30 rated, with  
new ironmongery to suit.

- SD Mains powered & interlinked  
Smoke Detector & sounder
- HD Mains powered & interlinked  
Heat Detector & sounder

**Part B- Fire Safety Notes**

Internal partitions and floors 30min fire resisting  
Party wall 60min fire resisting.  
Heat detector in kitchen  
Smoke detector in ground floor hall  
Smoke detector in first and second floor landing  
All windows to be fire egress windows

**Part F- Ventilation Notes**

WC to have mechanical extract linked to  
light switch providing 6l/second with 15min override  
Kitchen to have mechanical extract over  
cooker providing 30l/second  
Bathroom to have mechanical extract with  
15l/second with 15min override

**Pitched Roof & Mansard Construction (From Inside)**

0.18W/m2K U Value or better  
37.5mm Ecoliner under joists  
(Integral VCL)  
150mm Ecotherm Ecoversal between rafters  
Tyvek vapour open membrane over rafters  
25x50mm treated counterbattens over rafter.  
25x50mm treated tiling battens  
Artificial slate tiles to match existing.

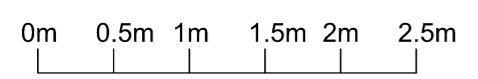
**Flat Roof Construction (From Inside)**

0.18W/m2K U Value or better  
15mm 10kg/m2 dense plasterboard, tape, fill & skim  
Timber joists as S/E design  
Firrings set to 1:40 fall fixed to joists  
25mm WBP Ply deck glued & screwed over furring.  
Rigid insulation to achieve u-value described.  
15mm WBP Ply deck fixed over insulation  
Warranted weatherproof membrane over-  
Single ply membrane, built up felt, resin or EPDM.

**Water Use 125l/person/day**

Target Usage, (Not all fittings used)  
Low volume dual flush WC 4/6L  
WC 6/4 litres dual flush or 4.5 litres single flush  
Shower 10 l/min  
Bath 185 litres  
Basin taps 6 l/min  
Sink taps 8 l/min  
Dishwasher 1.25 l/place setting  
Washing machine 8.17 l/kilogram

Proposed Rear Garden Elevation



Revision	Scale @ ISO A3	Approved By
P3	1:50	DL
Drawing Number		
A-3-001		