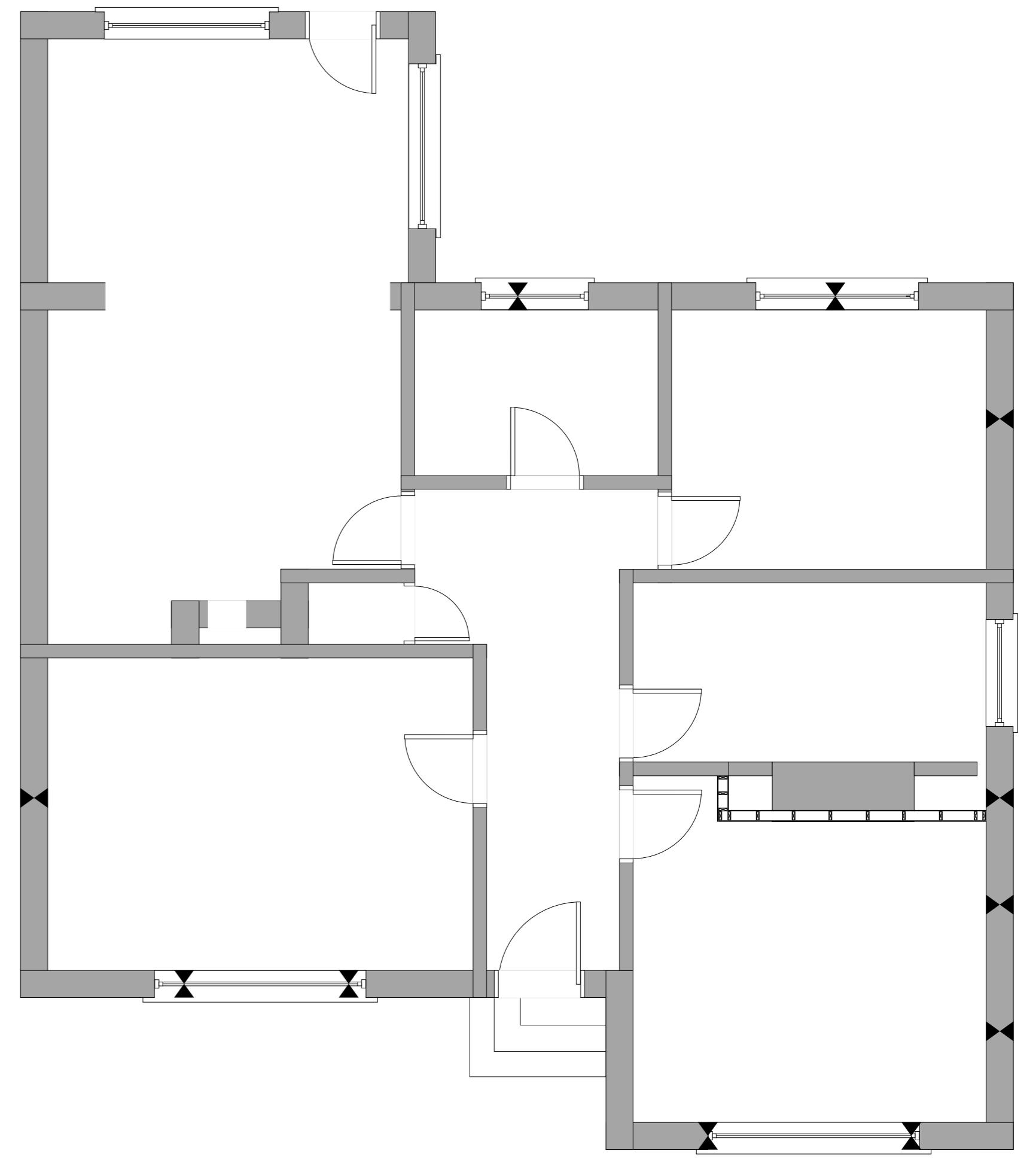
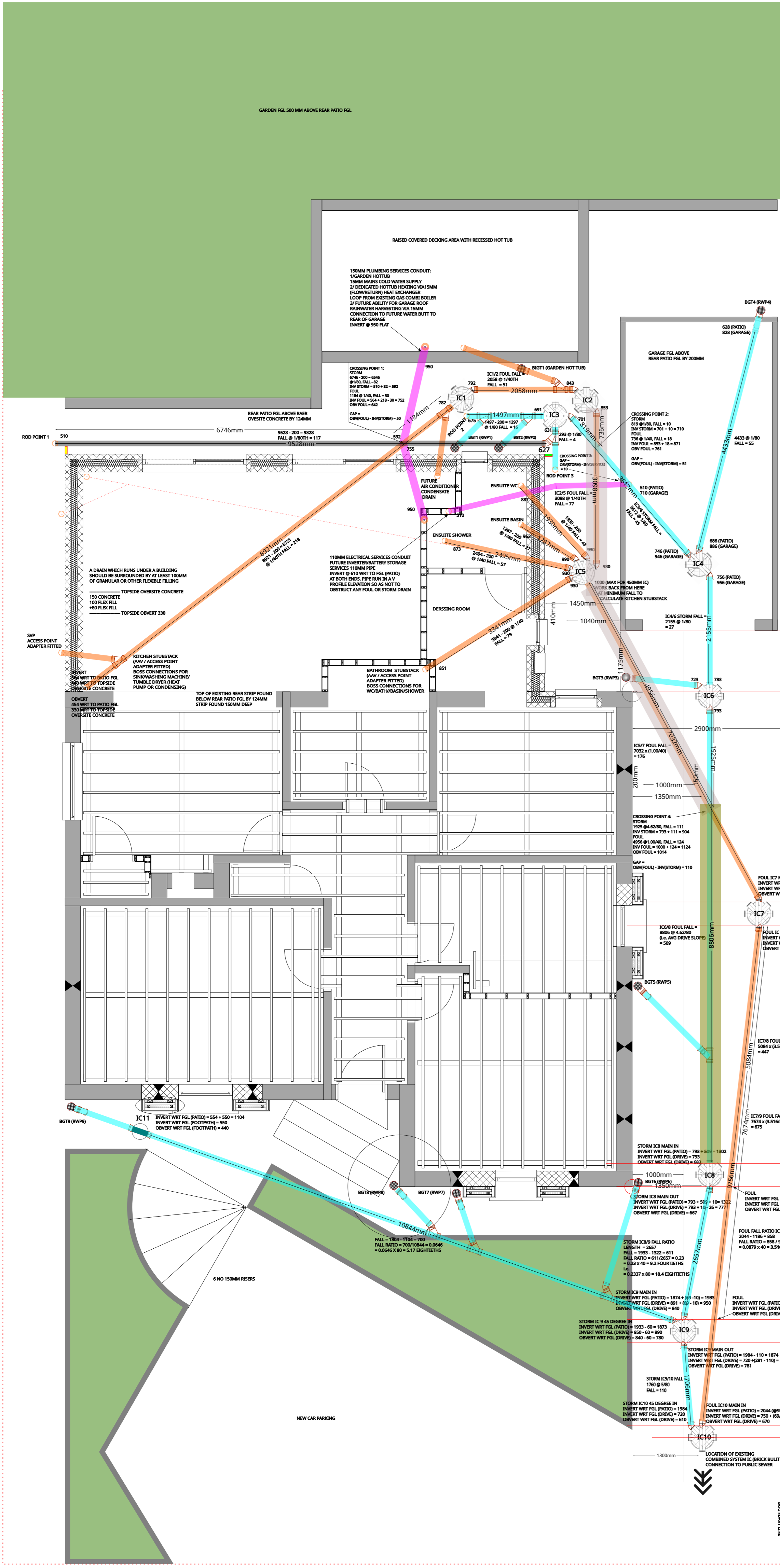


- COLOR CODING KEY / ABBREVIATIONS:**
- 410MM DRAIN TRENCH BASE AT A LEVEL LOWER THAN EXISTING DWELLING OR GARAGE FOUNDATION BASE AND WITHIN 1 METRE OF IT IS TO BE FILLED WITH CONCRETE UP TO THE UNDERSIDE OF THAT FOUNDATION
 - IF 410MM DRAIN TRENCH BASE IS AT A LEVEL LOWER THAN EXISTING DWELLING FOUNDATION BASE AND IS MORE THAN 1 METRE FROM IT THEN THE TRENCH IS TO BE FILLED WITH CONCRETE UP TO A DISTANCE BEYOND THE UNDERSIDE OF THAT FOUNDATION MEASURING THE HORIZONTAL DISTANCE BETWEEN THE EDGE OF THE FOUNDATION AND THE CLOSEST EDGE OF THE TRENCH LESS 150MM
 - FOUL DRAIN RUN (110MM PFP)
 - STORM DRAIN RUN (110MM PFP)
 - LAND DRAIN TRENCH (110MM PFP PERFORMED ON BOTTOM SIDE)
 - ELECTRICAL AND/OR PLUMBING SERVICES CONDUIT (110MM / 150MM PIPE AS INDICATED)
 - WWT WITH REFERENCE TO FINISHED GRADE LEVEL
 - BOTTLE GALLY TRAP
 - BACK INLET BOTTLE GALLY TRAP
- MESSAGE BOX FOR ALL NOTES HERE:



DRIVEWAY THREE REGIONAL SLOPE / FALL CALCULATIONS

DRIVEWAY AVERAGE FALL CALCULATION 1:
 BETWEEN FRONT GARAGE WALL FGL (EQUAL TO REAR PATIO) AND REAR WALL OF RESIDENCE FGL

LENGTH = 1151
 FALL 200 (88.000%)
 FALL RATIO = 200/1151 = 0.1738
 = 0.1738 X 80 = 13.9 EIGHTHETS
 L_A = 0.1738 X 80 = 13.9 EIGHTHETS

DRIVEWAY AVERAGE FALL CALCULATION 2:
 BETWEEN FRONT WALL AND REAR WALL OF RESIDENCE

LENGTH = 867
 FALL 154 (88.000%)
 FALL RATIO = 154/867 = 0.0578
 = 0.0578 X 80 = 4.62 FORTHETS
 L_A = 0.0578 X 80 = 4.62 FORTHETS

DRIVEWAY AVERAGE FALL CALCULATION 3:
 BETWEEN FRONT WALL OF RESIDENCE AND HEAD OF CTB

LENGTH = 480
 FALL 740 (88.000%)
 FALL RATIO = 740/480 = 1.523
 = 1.523 X 40 = 6.09 FORTHETS
 L_A = 0.1523 X 80 = 12.18 EIGHTHETS

DRIVEWAY AVERAGE FALL CALCULATION 4:
 BETWEEN FRONT WALL OF RESIDENCE AND HEAD OF CTB

LENGTH = 480
 FALL 740 (88.000%)
 FALL RATIO = 740/480 = 1.523
 = 1.523 X 40 = 6.09 FORTHETS
 L_A = 0.1523 X 80 = 12.18 EIGHTHETS