

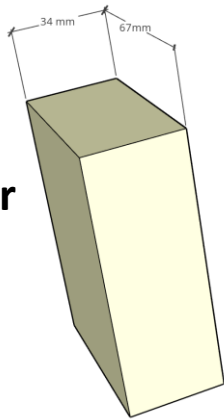
# **Building Warrant Proposal (v1)**

## **Velux Window Installation**

## Plan Components

### Existing Timber

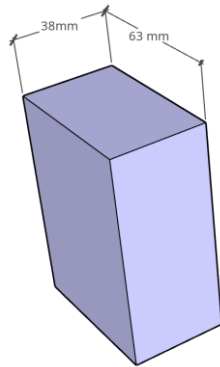
34 x 67mm



### New Timber

38 x 63mm

CLS (C16)



M12 Bolt & Nut

90mm long

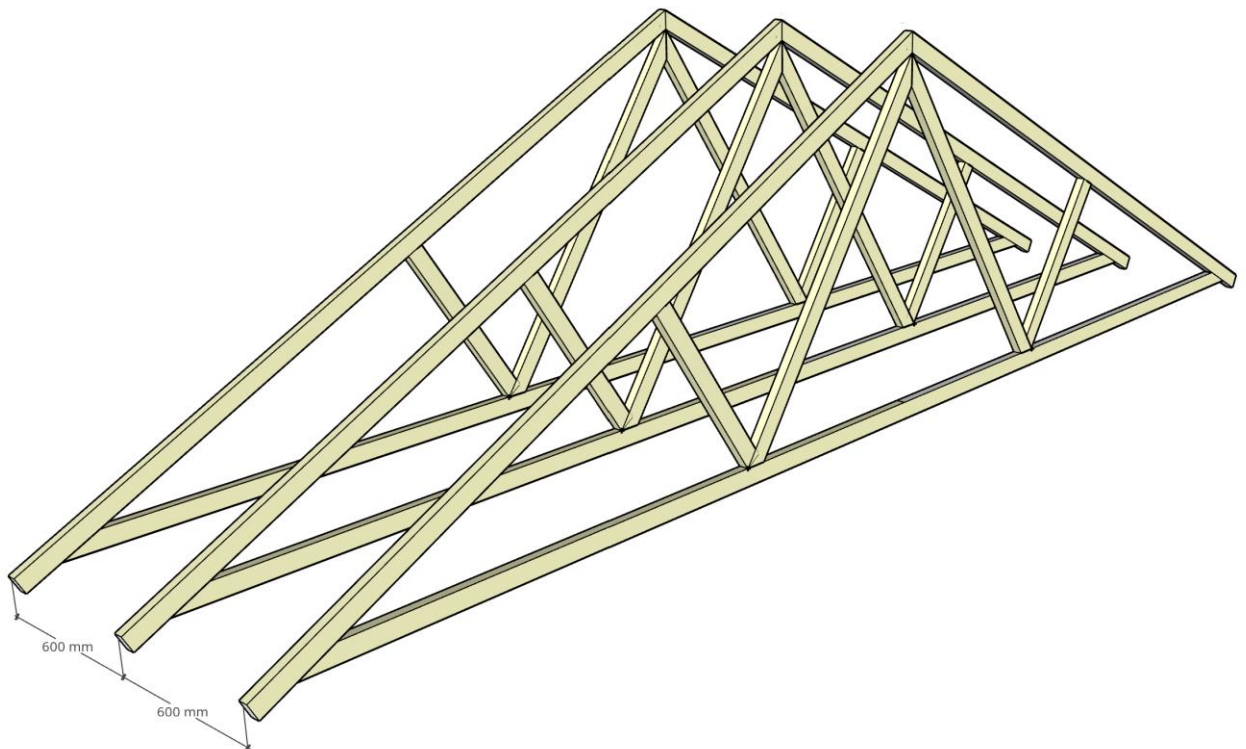
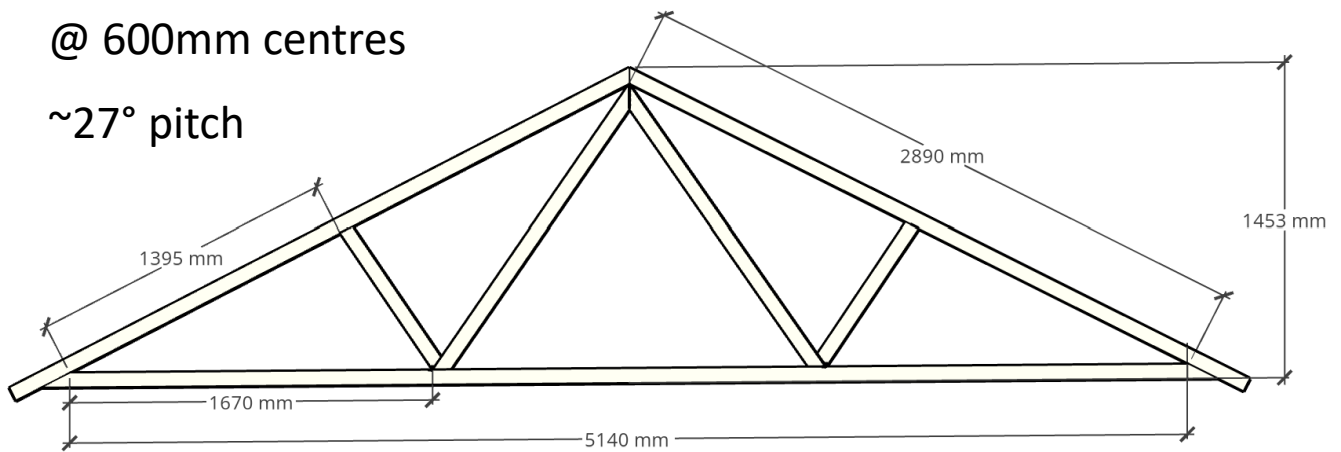
2 x washers

## As Is

### Fink Truss

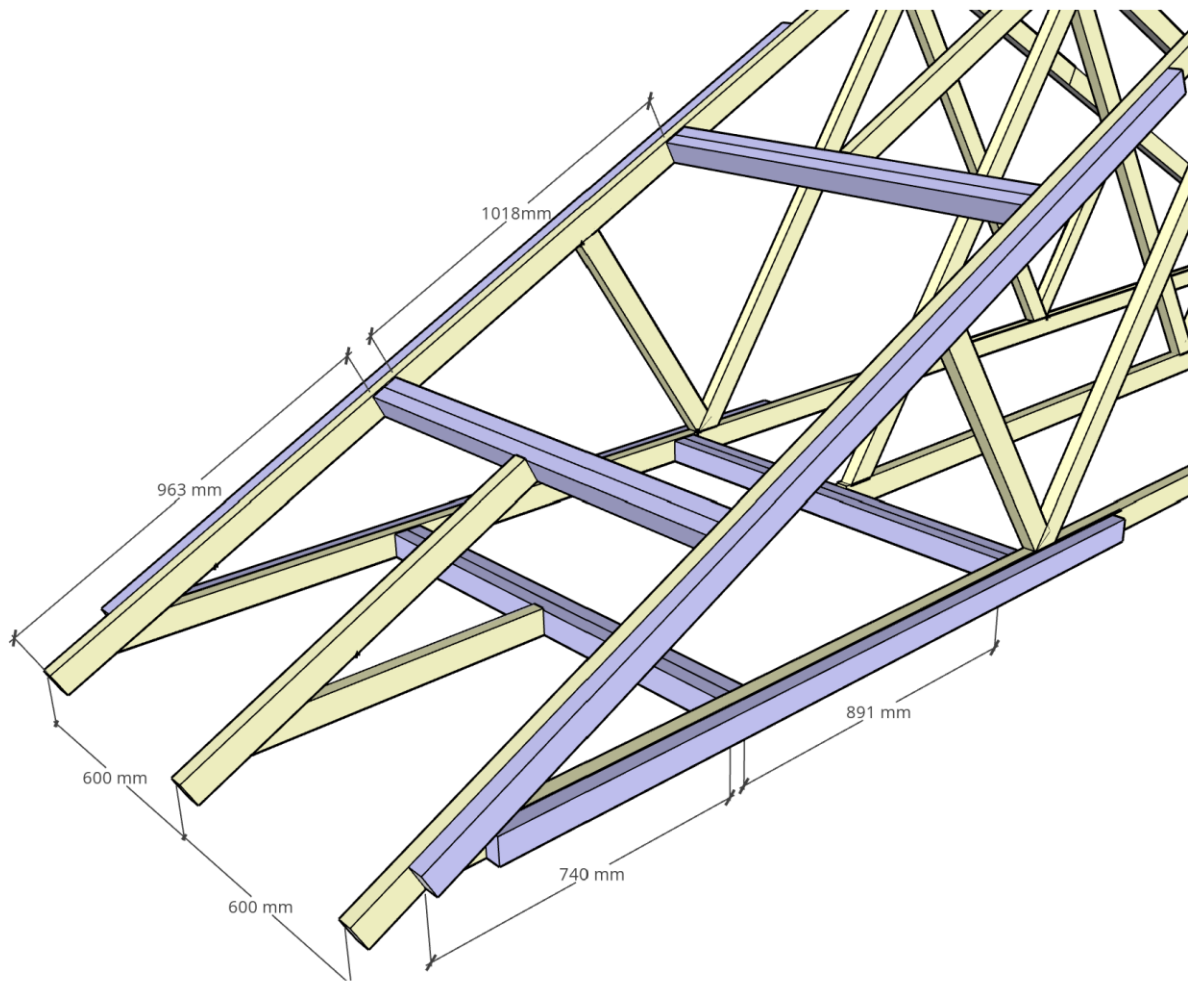
@ 600mm centres

~27° pitch



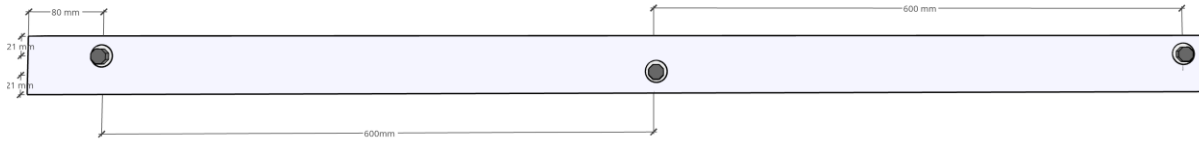
n.b. Nail plates not captured in drawings

## To Be



- One rafter to be cut (after appropriately supported)
- Double-headers added at top and bottom
- Trimmers added to rafters either side of cut rafter
- Bottom chord, on same truss as above, to be cut (after appropriately supported)
- Double-headers added at top and bottom
- Trimmers added to bottom chords either side of the cut chord
- Velux will be positioned within space created in roof – exact location T.B.C.

## **Trimmer Installation**



- First bolt 80 mm from start of trimmer

- Set at 1/3 depth (21mm)

- Subsequent bolts at 600mm centres

- Set at alternating 1/3 depths

- Final bolt 80 mm from end of trimmer

- Set at 1/3 depth (21mm)

## **Double-Header Installation**

- 2x (38x63mm) Timber joined with glue and fixed with 4x (6x70mm) Timber screws

- Header fixed to cut rafter(s) by 2x (6.7x150mm) Structural Timber Screws

- Header fixed to double trimmer by 2 x (6.7x150mm) Structural Timber Screws (repeated on both sides)

## **Velux Details**

-VELUX GGL FK04 Centre Pivot Roof Window - 66cm x 98cm (Double Glazed)

-Velux BDX FK04 2000 660x980 Insulation Collar

-VELUX EDW FK04 Tile Flashing