



## Installation Instructions Drayton LP111

These are your installation instructions to replace your programmer with the tado° Smart Thermostat. Please follow the instructions carefully and only confirm the successful installation once you have finished all steps for all devices.



If you have any question regarding the use or installation of tado° please consult our Help Center at [www.tado.com/support](http://www.tado.com/support)

## Switching off your boiler and corresponding circuit breaker

Make sure that you take steps to ensure that the power supply to your boiler is completely switched off and remains switched off during the installation process. In addition it is compulsory to remove the breaker/fuse that your boiler is connected to, or turn of the corresponding switch in your circuit breaker box.

Please leave a message at the circuit breaker box such to inform everyone not to turn anything back on.



If you are not 100% sure which is the correct switch/breaker/fuse then you must remove all breakers/fuses or turn off the main power switch in your circuit breaker box.



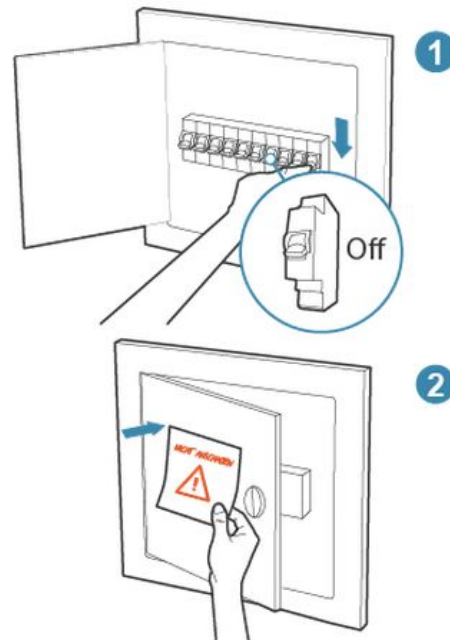
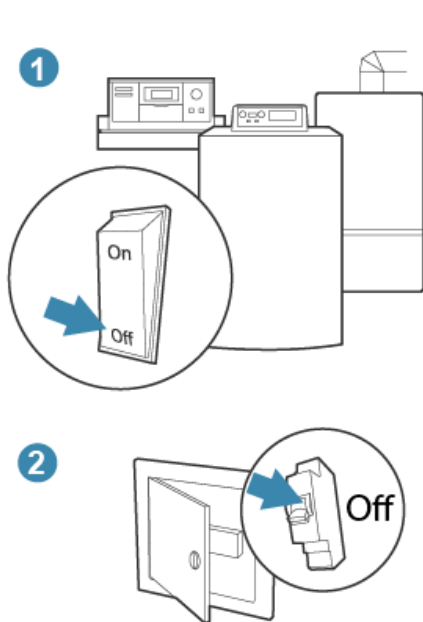
Please make sure that all residents of the home are aware that you are going to turn off and that you are the only one who is allowed to switch it on again.



Please be aware that your desktop computer and lighting will turn off when you switch off the mains power circuit breaker switch.

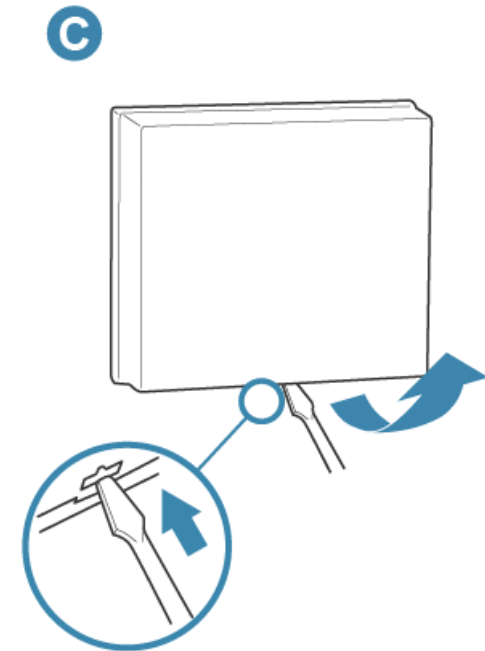
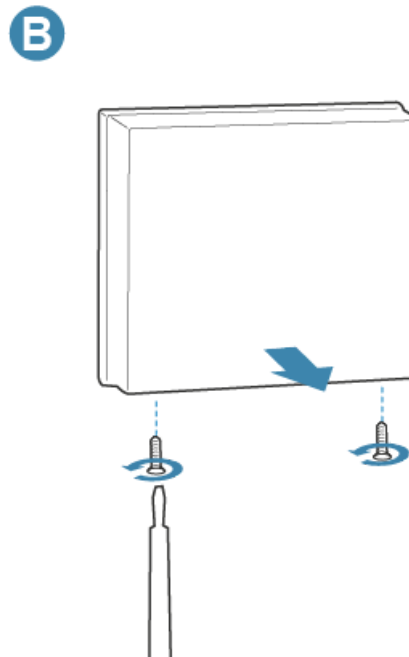
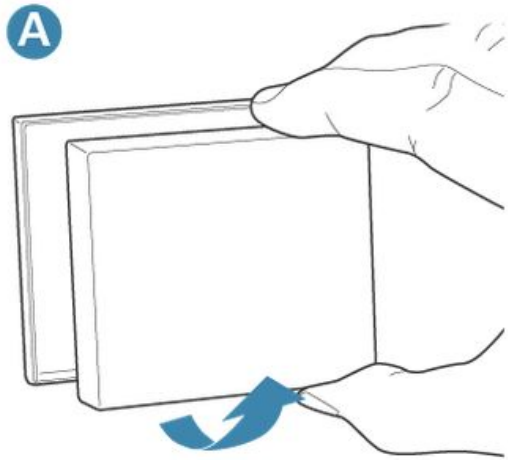


To provide safe lighting for the installation you can use the flashlight function of your smartphone or a torch.



## Open your programmer

Remove the cover to open your programmer. There are different opening methods for every device. In most cases a few screws need to be removed. Have a look at our different examples to get an idea.

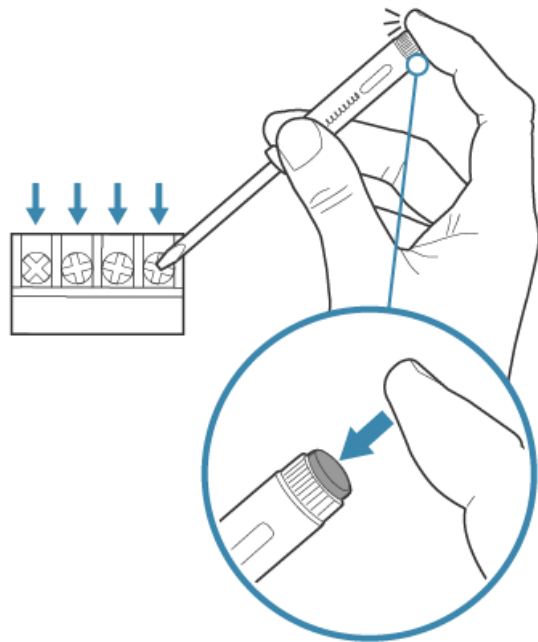


### Make sure the power is off

Use the voltage tester to check if there is still power on any wiring terminal.

If there is any light it means that there is still power on the wiring. Before continuing, switch off the circuit breaker.

If there is no light, power is off and it is safe to proceed.



**WARNING:**  
POWER STILL ON



## Documenting the wiring of the existing setup

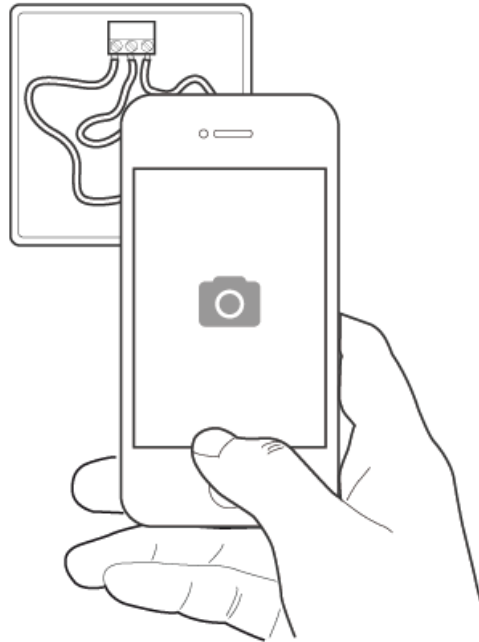
As soon as you have removed the cover please take detailed photos of the existing wiring with the cables still attached. Try your best to make the terminal numbering legible.



This step is very important, you will definitely need this information in the future. Should you need help, it will be difficult for our Technical Support Team to assist you without the photos of all of the current wiring.



You will need these photos to restore your old system if you move house in order to take your tado° with you. Please save them in a place where you will find them again in this case.

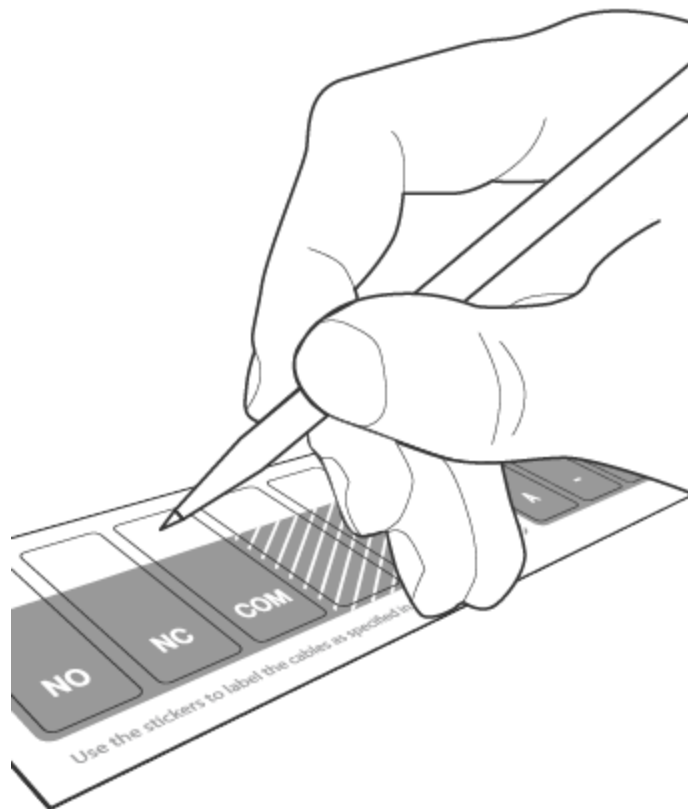


## Preparing the labels

Use a pen to prepare the labels according to the image.



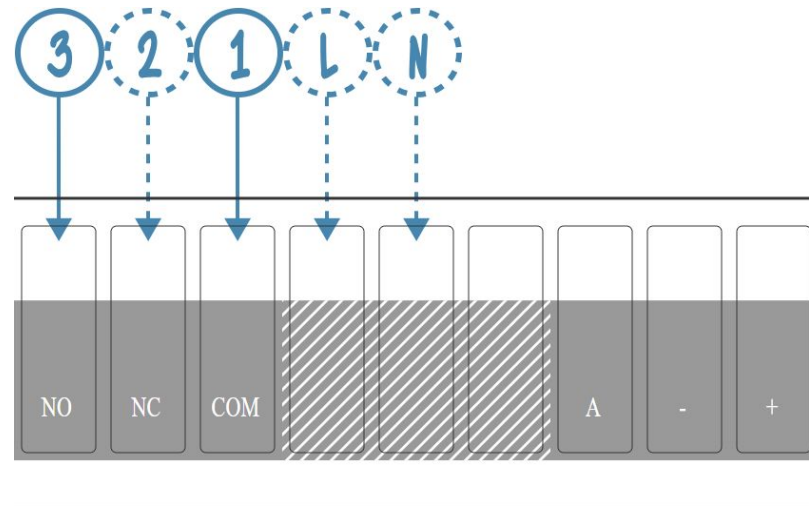
Correct marking of the labels is important in order to connect tado° correctly later. Be sure to mark the labels exactly the same way as shown in the figure.



Label the stickers as shown below:



Dashed numbers indicate a label that might not be used for your particular system. Please prepare these labels anyway but be aware they might not be used.



## Attaching the labels

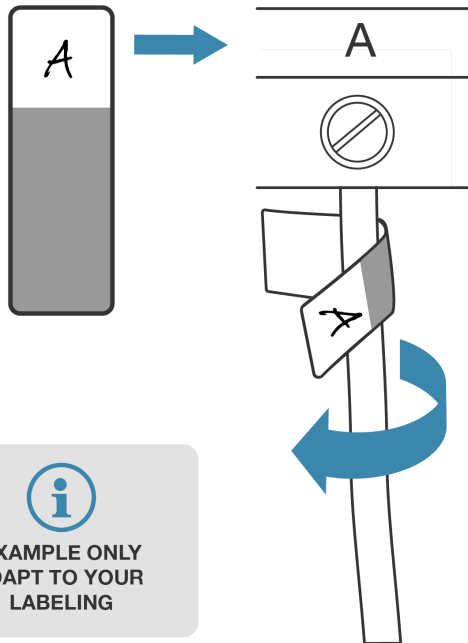
Attach the labels to the wires. Double check that the handwritten numbers match the markings on the screw terminals



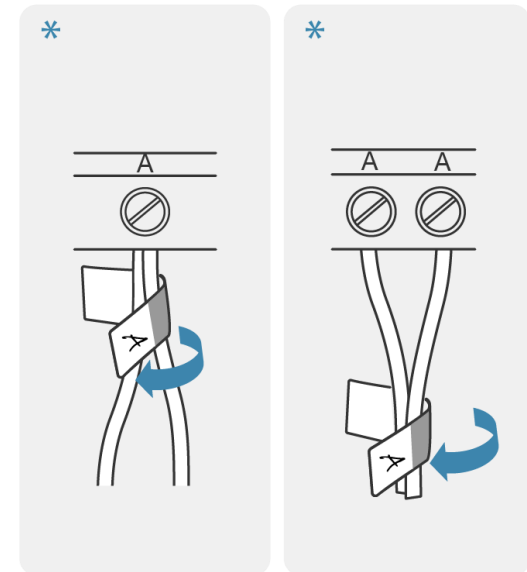
If you have a **bridge wire** connected between any of the terminals, please contact us with a picture of the wiring before you proceed



\* In case you have wires to both terminals with the same labelling connected or more than one cable connected to an terminal, all these wires have the same label attached.

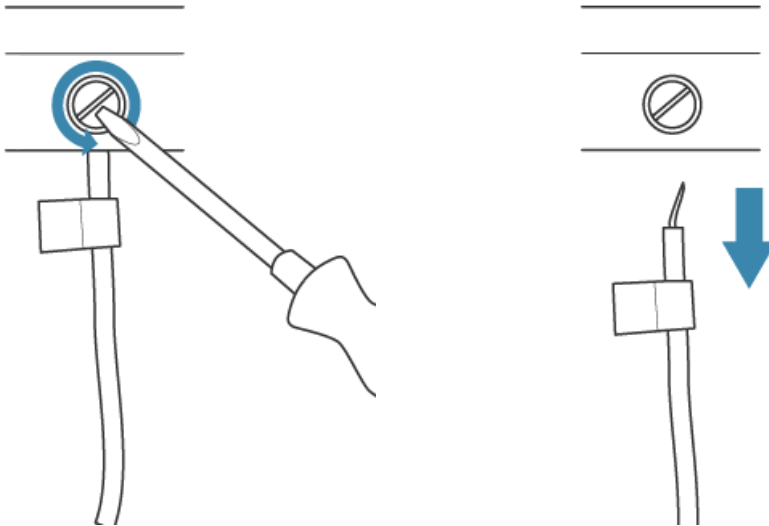


EXAMPLE ONLY  
ADAPT TO YOUR  
LABELLING



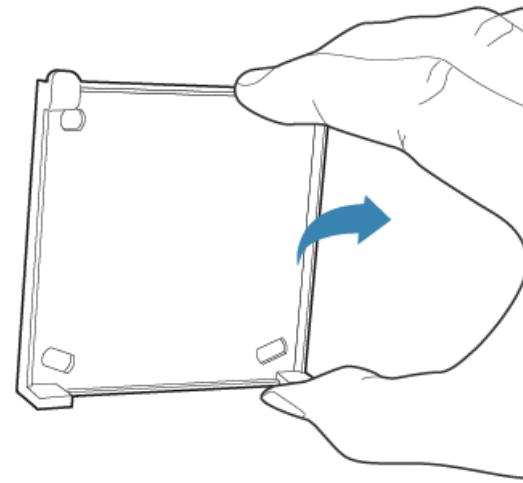
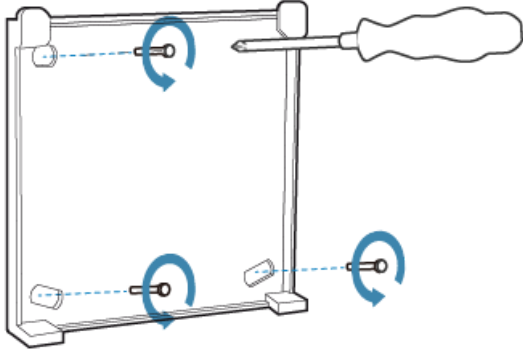
## Releasing the wires

Now, release the wires of the old programmer. Turn the screws to open the terminals and pull the cables out. Do so for each individual cable.




## Remove the old programmer backing plate

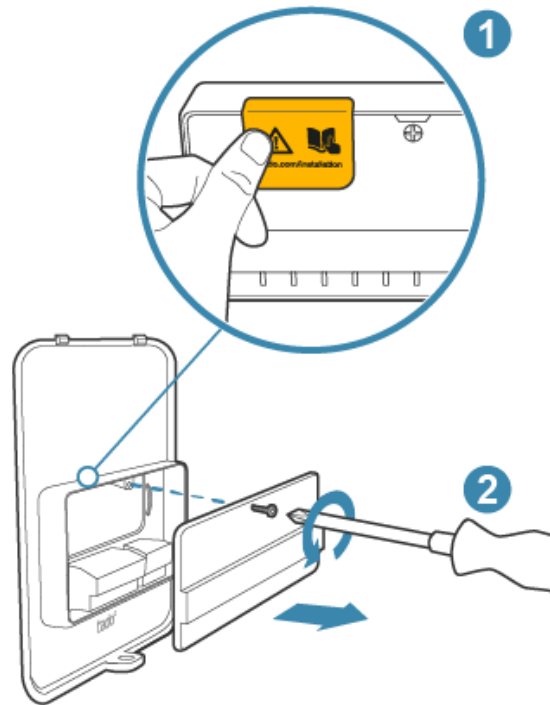
Remove the securing screws that are holding the backing plate of the programmer in place and then remove the plate from the wall completely.



## Removing the terminal cover of the tado° Smart Thermostat

If present, please remove the orange security sticker at the terminal cover and release the cover by loosening the small screw as shown.

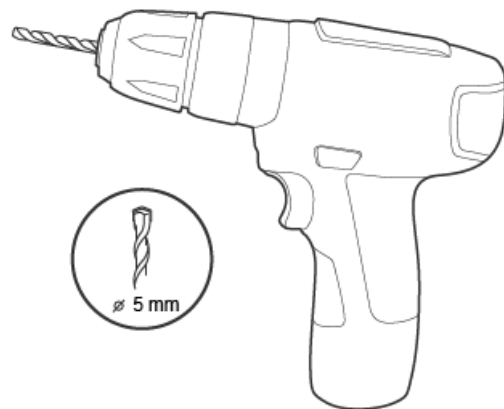
 Not all Smart Thermostats have this additional cover. If yours does not have it, simply move on to the next step.



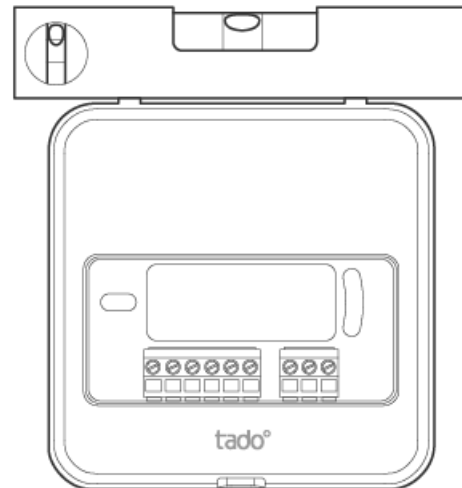
## Mounting the tado° Smart Thermostat

Please prepare a power drill with a 5mm drill bit.

**i** If your previous thermostat has been mounted on a wall socket you do not have to drill any holes, but can simply mount your tado° Smart Thermostat directly on the wall socket itself.

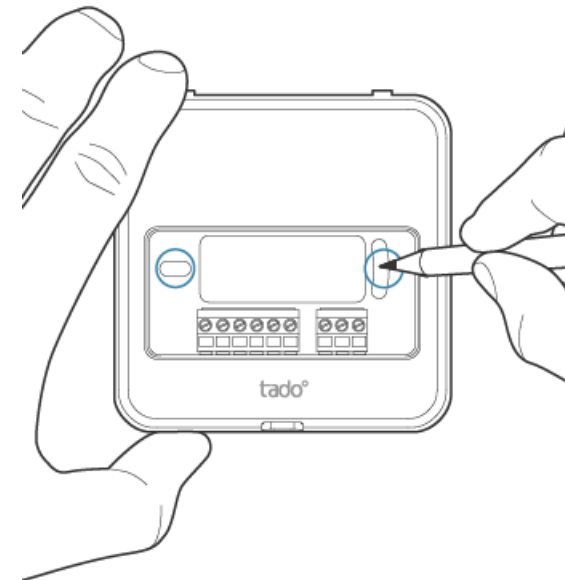


Use a spirit-level to align the tado° backing plate horizontally on the wall.



Use a pencil to mark two holes at the place of your intended installation.

**i** Please be aware that the black terminal block of the tado° backing plate should be lowest.



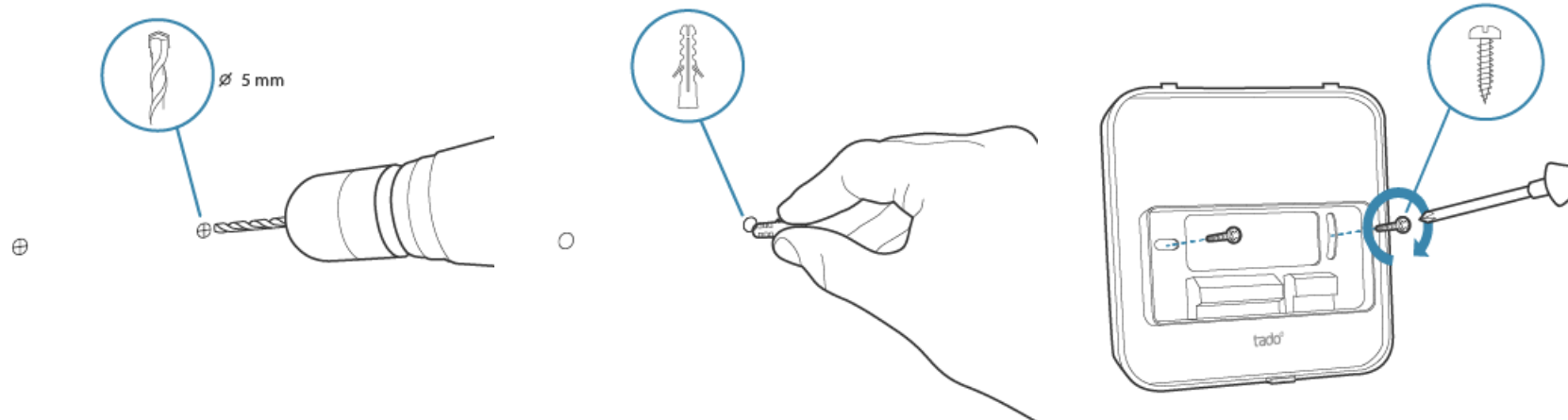
## Mounting the tado° Smart Thermostat

Drill two holes with a diameter of 5mm at the positions you previously marked.

Now push the rawplugs supplied into the holes you have drilled. Ensure the holes are deep enough so that the rawplugs do not protrude from the wall and therefore prevent the correct mounting of the tado° box backing plate.

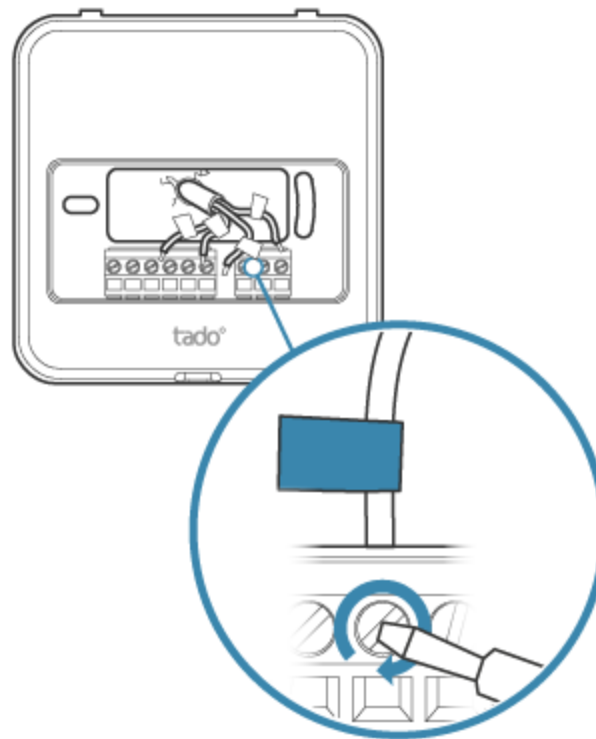
Now use the screws supplied to attach the tado° backing plate to the wall.

**i** Please be aware that the black terminal block of the tado° backing plate should be at the bottom!



## Connecting the wires to the tado° Smart Thermostat

Next, please connect the cables to the tado° Smart Thermostat. Please pay attention that the **blue** labels match the labeling of the terminals. Striped labels go to the terminals which do not have a label.



## Closing of the tado° Smart Thermostat

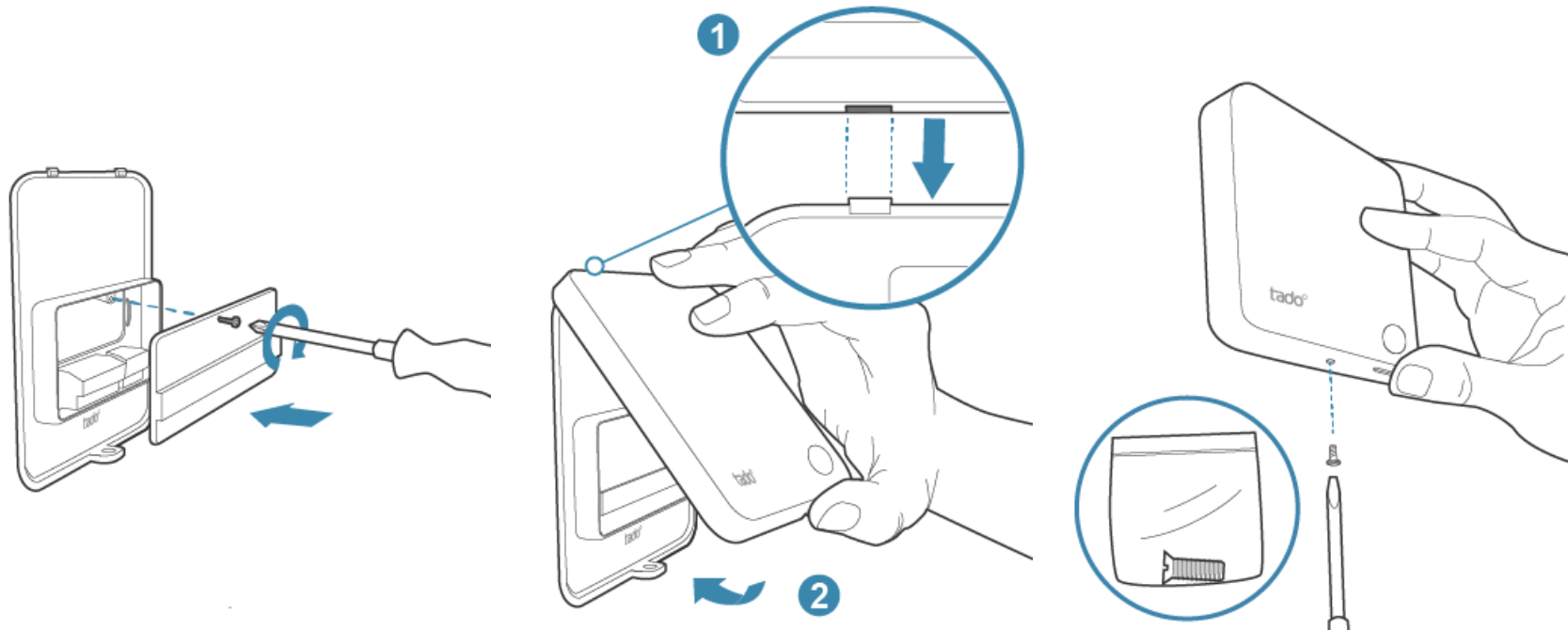
Mount the terminal cover and tighten the security screw as shown in the image.

**i** Not all Smart Thermostat have this additional cover. If yours does not have it, simply continue with the next step.

Hook-up the lid to the upper edge of the housing box. Make sure that the two little hooks at the top are matched with the respective holes and that the tado° logo is at the bottom left.

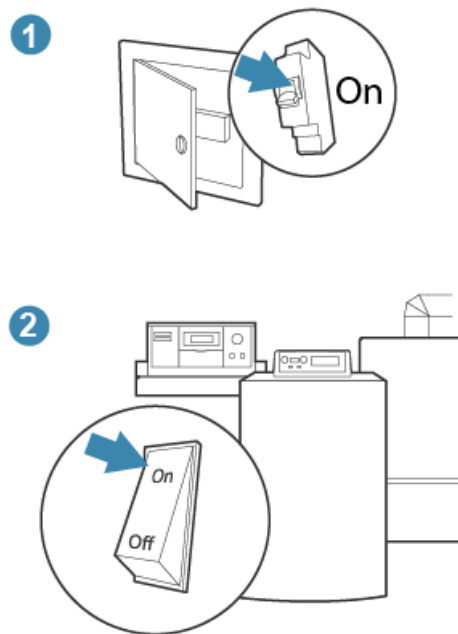
Click the bottom of the lid into place until the lid retention mechanism locks.

Tighten the small screw at the bottom.



## Switching the boiler and circuit breaker switch back on

You can now turn the power back on. Please reverse the steps that you took to turn the power to the boiler off.



You have now successfully completed the installation of your tado° Smart Thermostat. Please confirm the installation on the installation page in your account and continue with the installation of the other devices as displayed there.