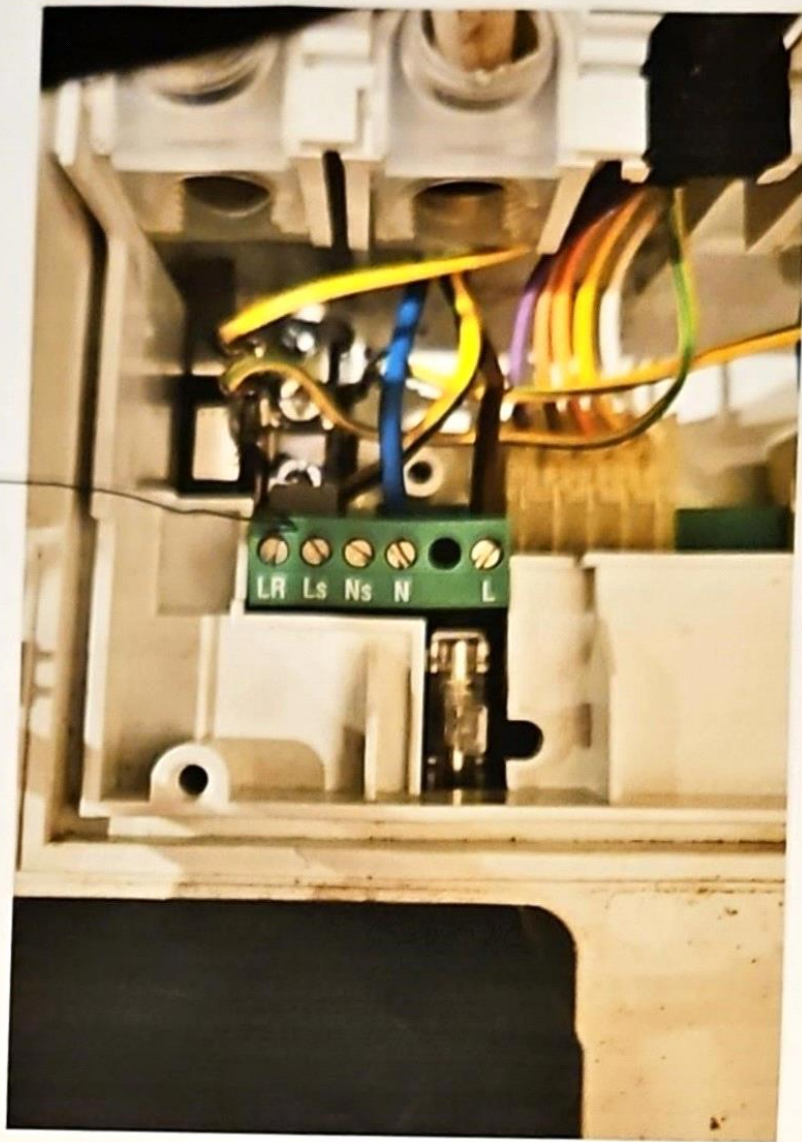


Nest E, to Greenstar 30cdi

- ① Turn off power to boiler at main board.
- ② Lower control panel into maintenance view.



Removed
Link between
LR LS

Extra wiring to fit
Brown wire
LR to C on
Heat link

Blue wire

LS to No on
Heat link.

Disconnected ~~timer~~ ~~panel~~ by unplugging ribbon.

You may get an error message on Nest E thermostat after setup & during testing saying no open Therm. Change Open Therm to on & off in control section.