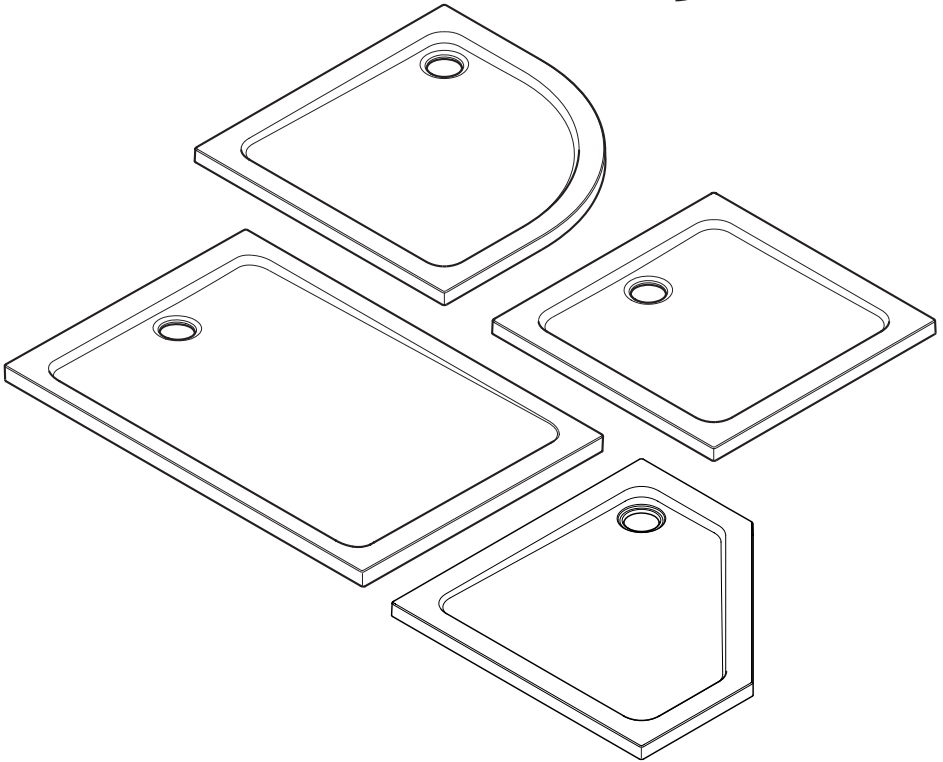


mira

Flight



MIRA FLIGHT

LOW LEVEL SHOWER TRAY

Installation and User Guide

These instructions are to be left with the user

1101274-W2-D

INTRODUCTION

Thank you for purchasing a quality product. To enjoy the full potential of your new shower tray, please take time to read this guide thoroughly, and keep it handy for future reference.

Guarantee

Mira Showers guarantee the Mira Flight Low Level Shower Tray against any defect in materials or workmanship for a period of **ten** years from the date of purchase. For terms and conditions refer to the back cover of this guide.

Recommended Usage	
Domestic	✓
Light Commercial	✓
Heavy Commercial	✓
Healthcare	✓

IMPORTANT INFORMATION

Important! The shower trays featured in this manual are available for use as riser and non-riser products and are supplied with the Vortex Waste.

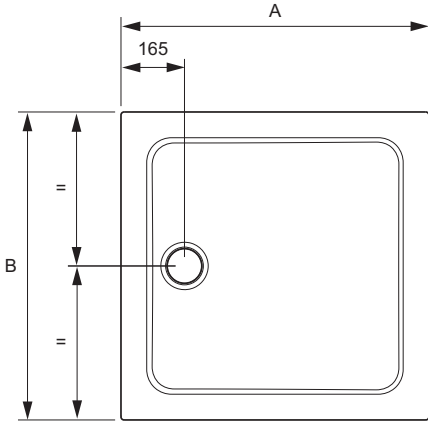
Carefully unpack and check the tray for colour, size, general acceptability and compatibility with the shower enclosure and other bathroom furniture.


Check for transit damage and report any faults immediately to your supplier. No claims for the above will be considered after installation.

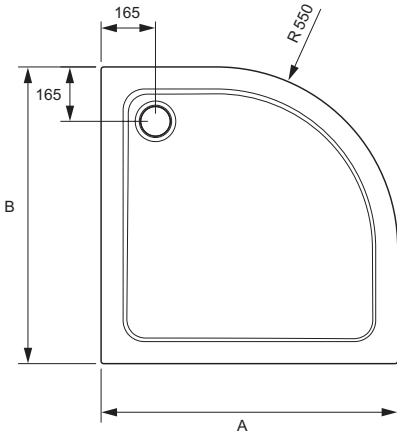
Carefully remove all of the blue protective film from the tray for inspection.


Caution! Additional protective coverings such as a dust sheet should then be used to protect the tray from damage from falling objects

DIMENSIONS

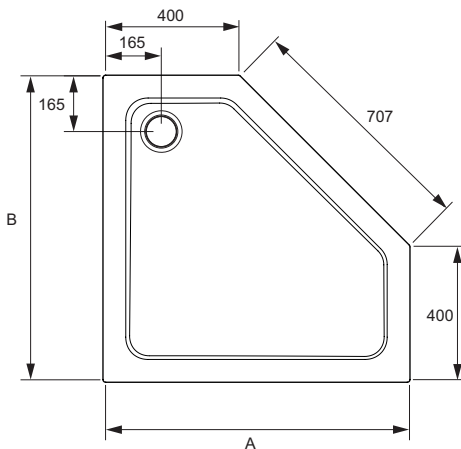



A	B	C	D	
760	760	25	17	9
800	800	25	16	9
900	900	25	14	9

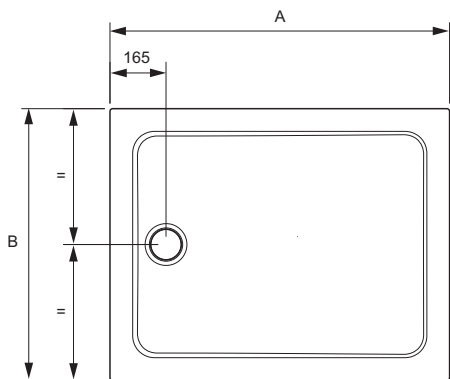



A	B	C	D	
800	800	25	16	9
900	900	25	14	9
800	1000	25	12	9
900	1200	25	9	11

* Offset Quad Trays available in Left Hand (LH) and Right Hand (RH) versions.
See page 18 for handing conventions.



A	B	C	D	
900	900	25	14	9

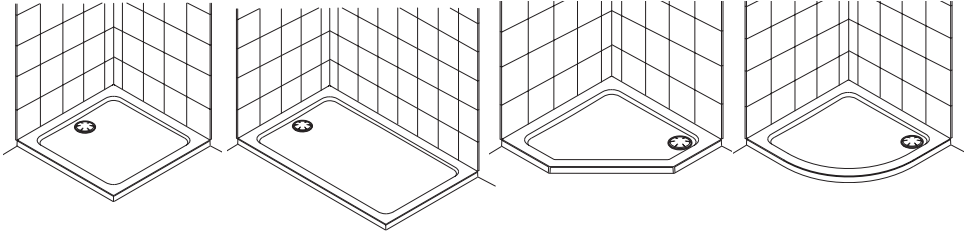


A	B	C	D	
1700	760	24	4	13
1700	700	24	4	13
1600	760	24	4	13
1600	700	24	4	13
1500	760	24	3	13
1400	760	25	5	13
1400	800	25	5	13
1200	900	25	9	11
1200	800	25	9	11
1200	760	25	9	11
1100	800	25	12	11
1000	800	25	12	9
1000	760	25	12	9
900	760	25	14	9

Side Profile of Tray

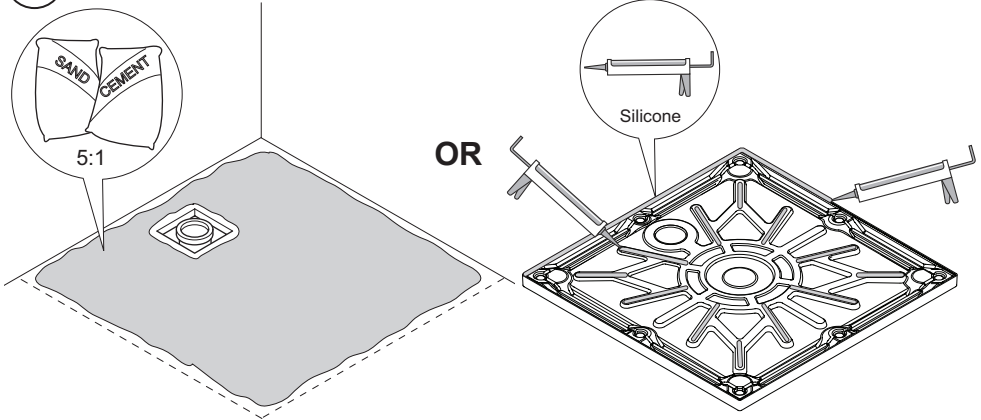


INSTALLATION OF SHOWER TRAY



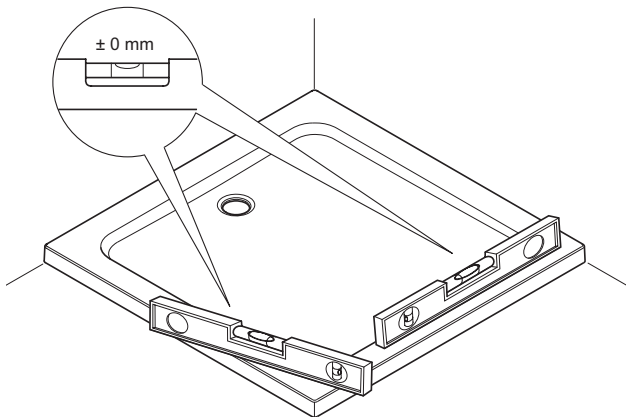
Note! Shower must not produce more than 25 litres per minute.

1



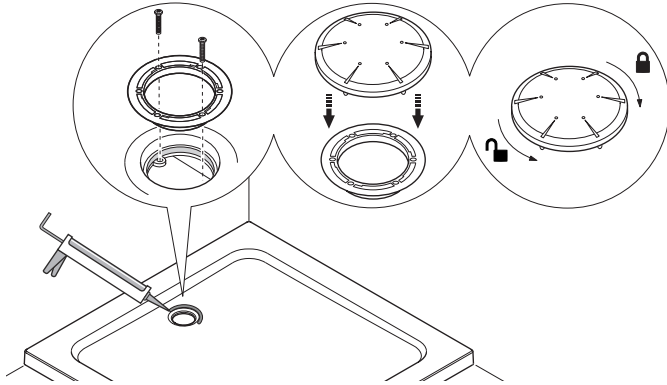
a. Install the shower tray on a bed of sand and cement or silicone sealant.

2



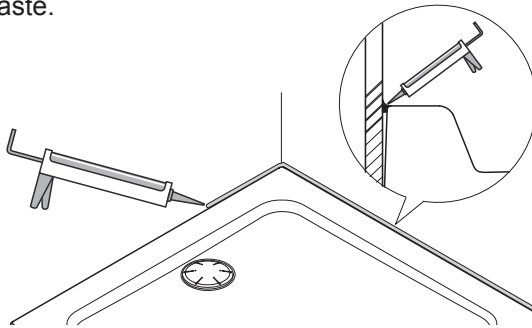
a. Make sure that the shower tray is level.

3



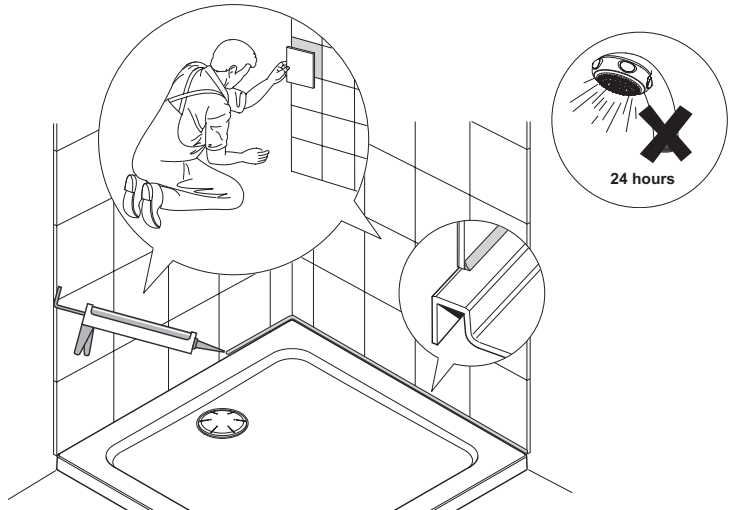
a. Install the waste.

4



a. Apply silicone sealant in accordance with the manufacturer's instructions to seal the shower tray to the wall.

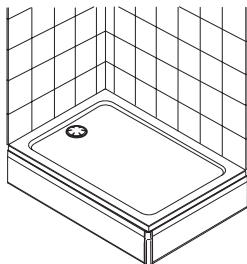
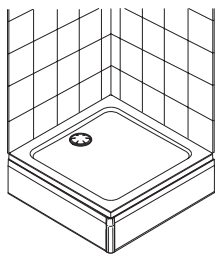
5



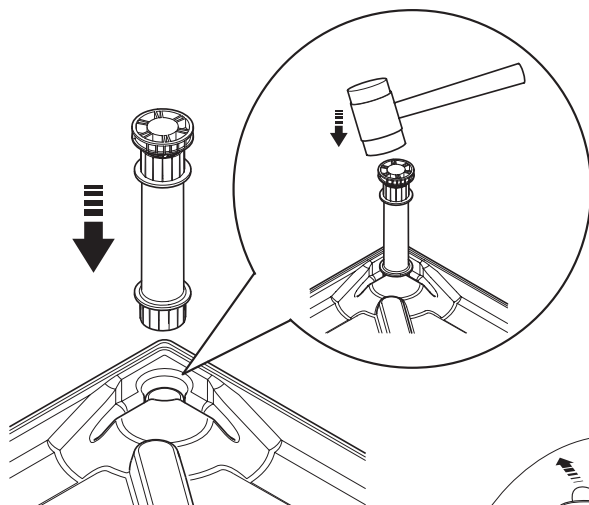
a. Tile the walls.

b. Apply silicone sealant in accordance with the manufacturer's instructions to seal the shower tray to the tiled wall surface.

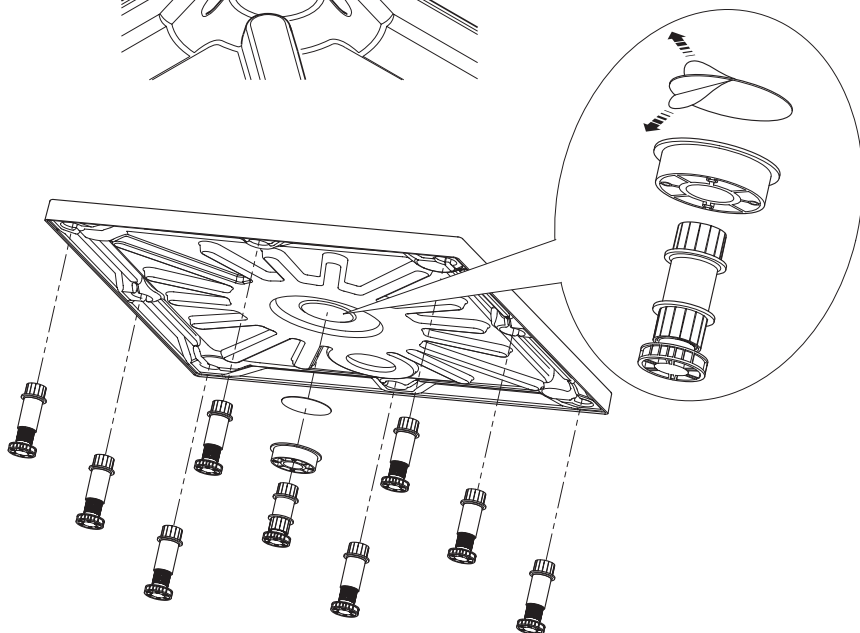
INSTALLATION OF RISER KIT

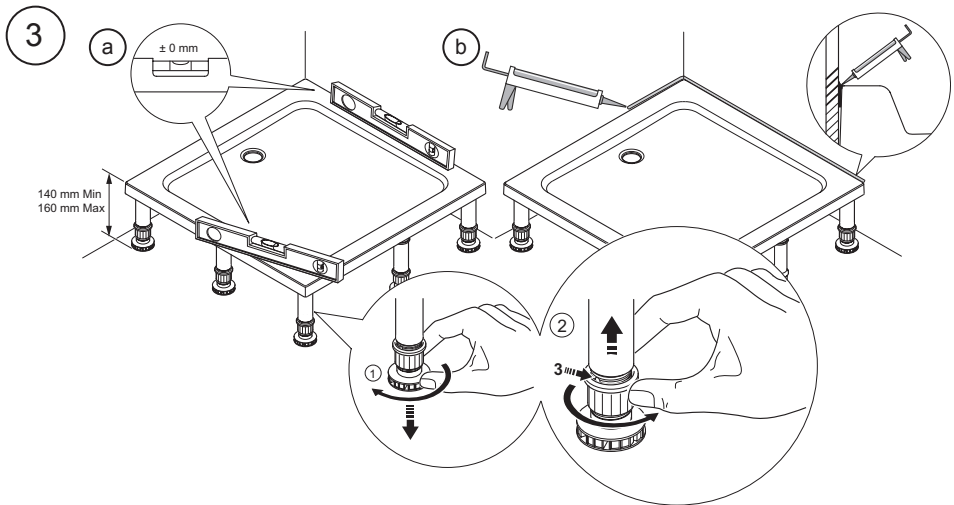


1

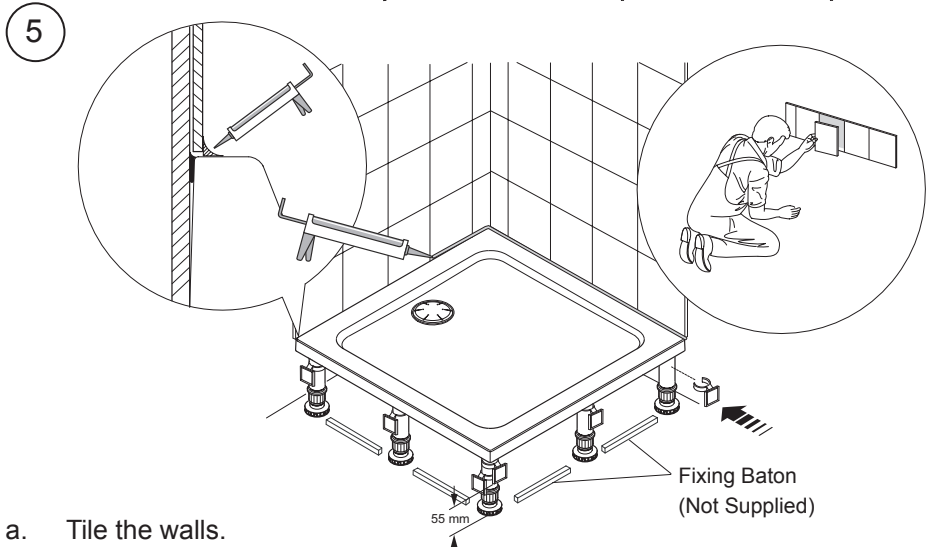
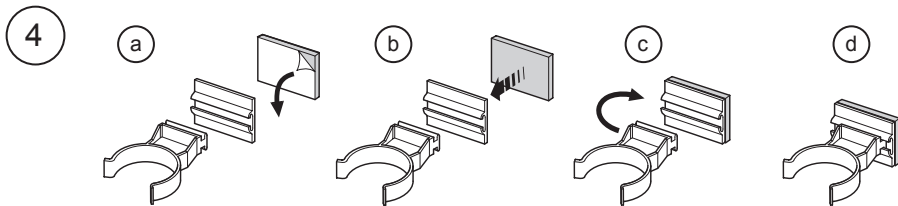


2



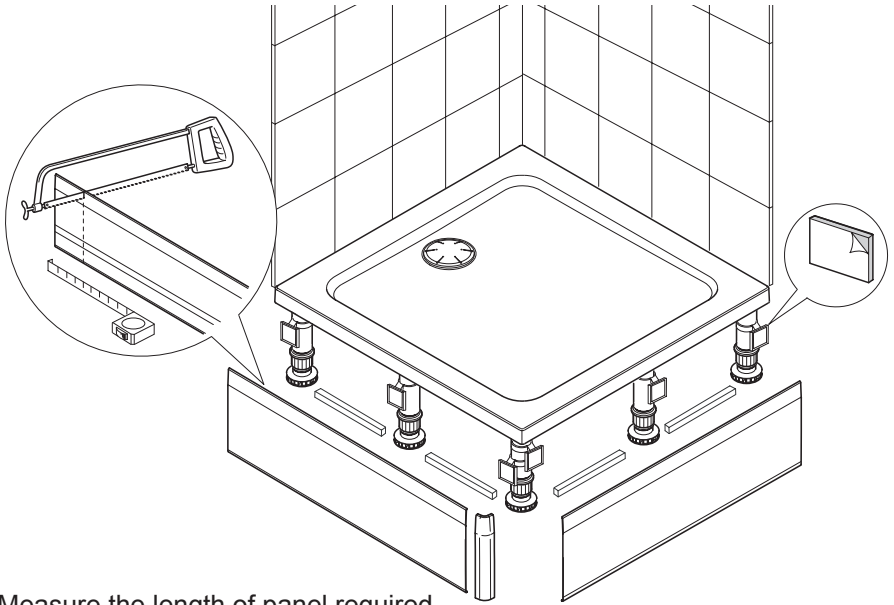


- a. Make sure that the shower tray is level, adjust the legs as necessary.
- b. Apply silicone sealant in accordance with the manufacturer's instructions to seal the shower tray to the wall.



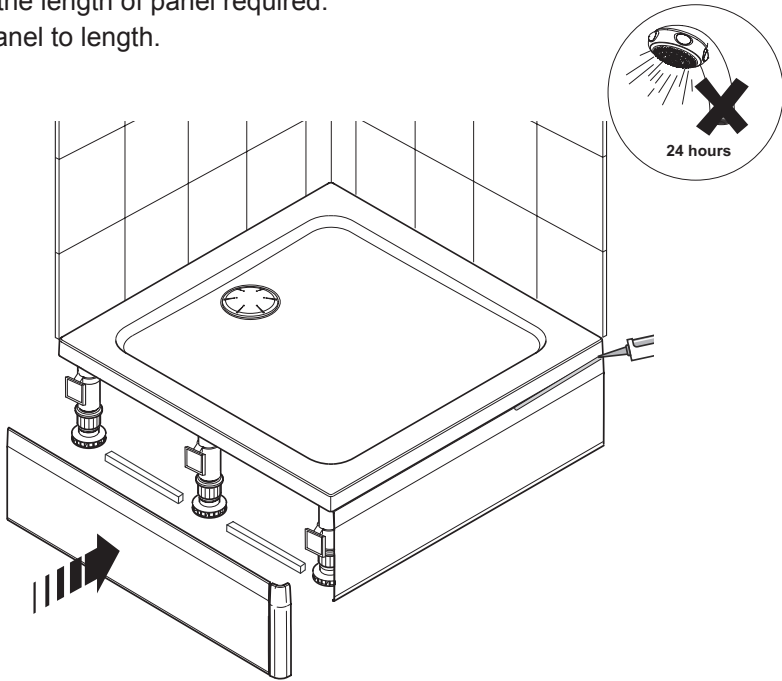
- a. Tile the walls.
- b. Apply silicone sealant in accordance with the manufacturer's instructions to seal the shower tray to the tiled wall surface.

6

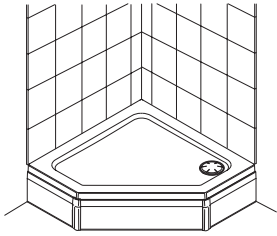


- a. Measure the length of panel required.
- b. Cut the panel to length.

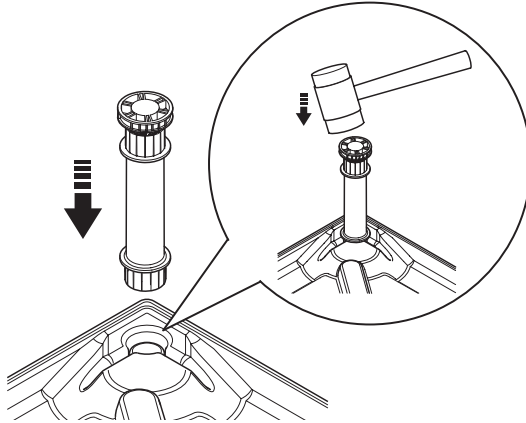
7



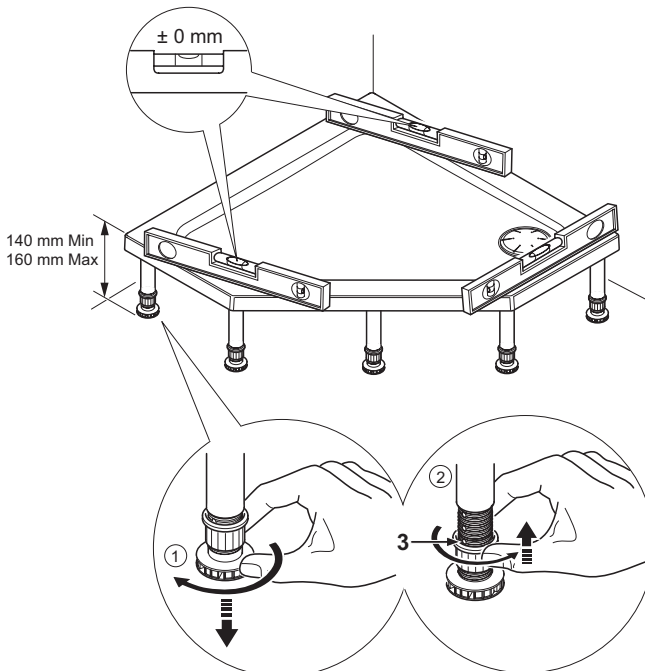
- a. Fit the panels in position and press firmly.
- b. Apply silicone sealant in accordance with the manufacturer's instructions to seal the edge of the panel to the shower tray.



1

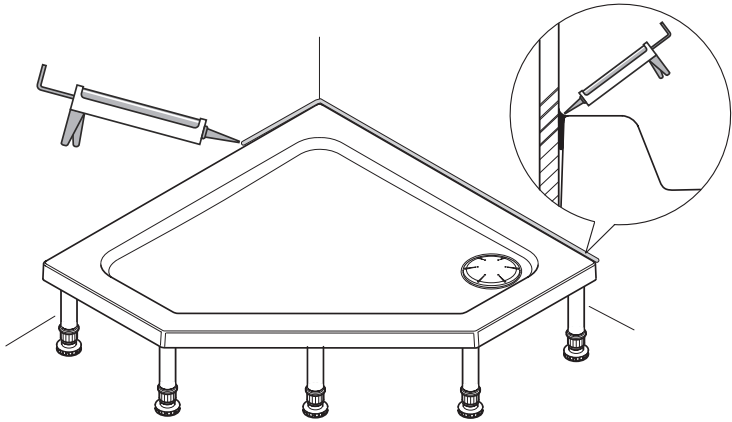


2



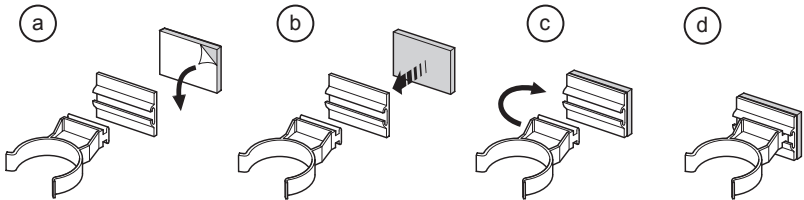
a. Make sure that the shower tray is level, adjust the legs as necessary.

3



a. Apply silicone sealant in accordance with the manufacturer's instructions to seal the shower tray to the wall.

4

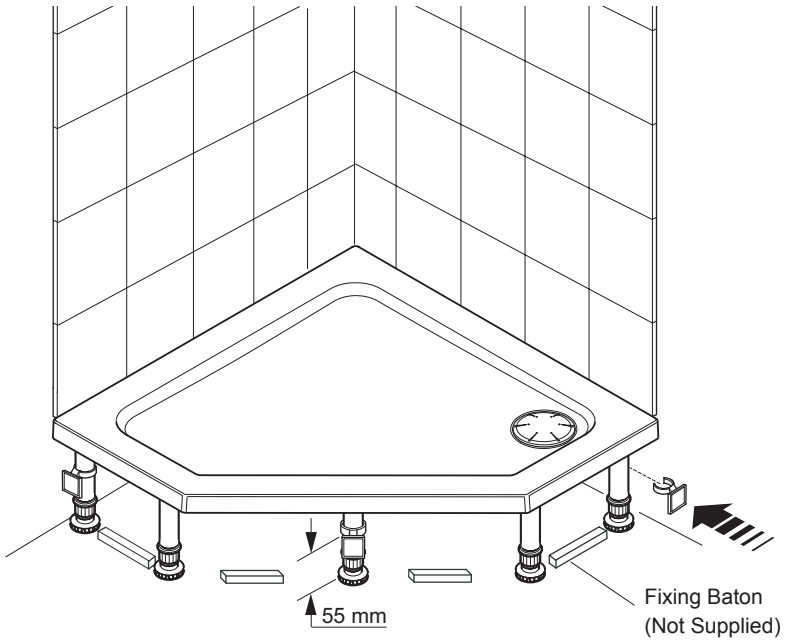


5



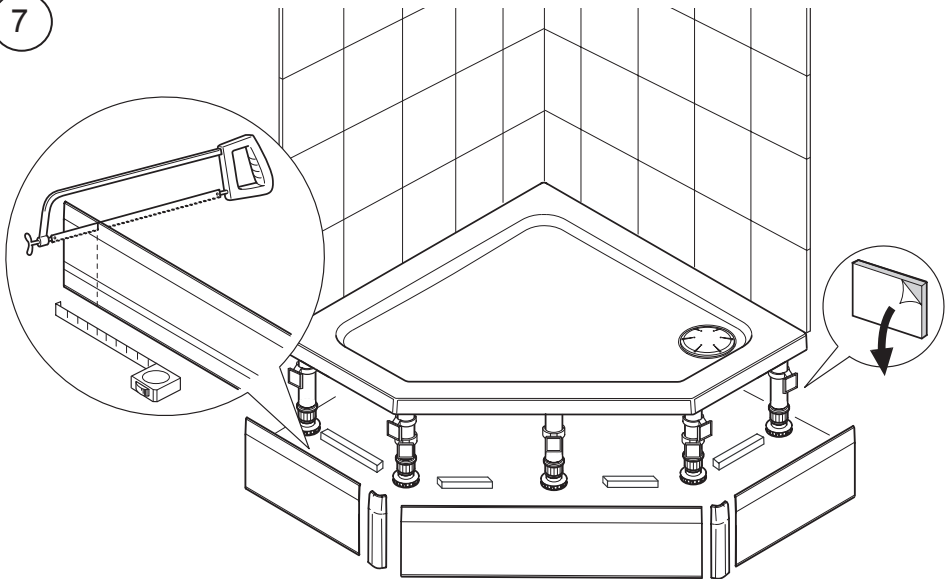
a. Tile the walls.
b. Apply silicone sealant in accordance with the manufacturer's instructions to seal the shower tray to the tiled wall surface.

6



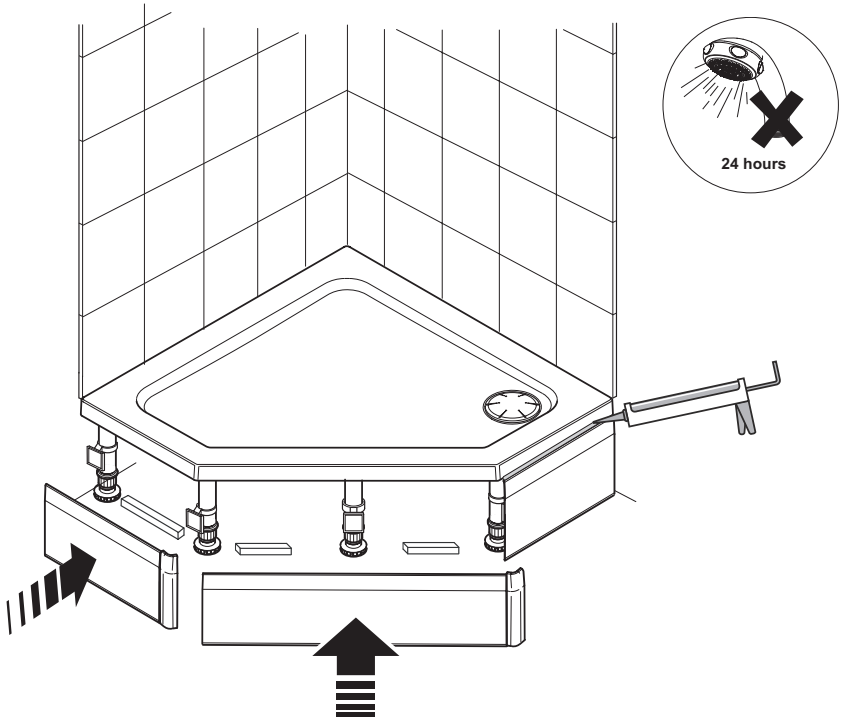
a. Fit the clips to the legs.

7



- a. Measure the length of panel required.
- b. Cut the panel to length.

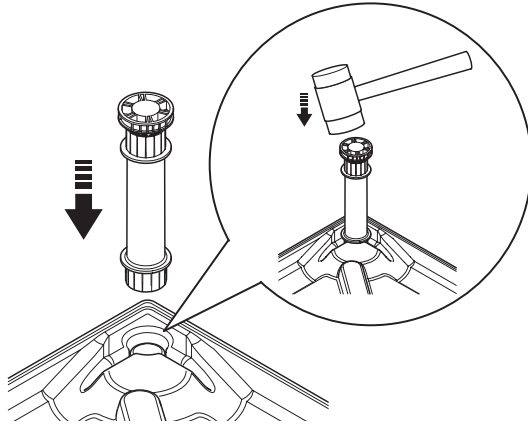
8



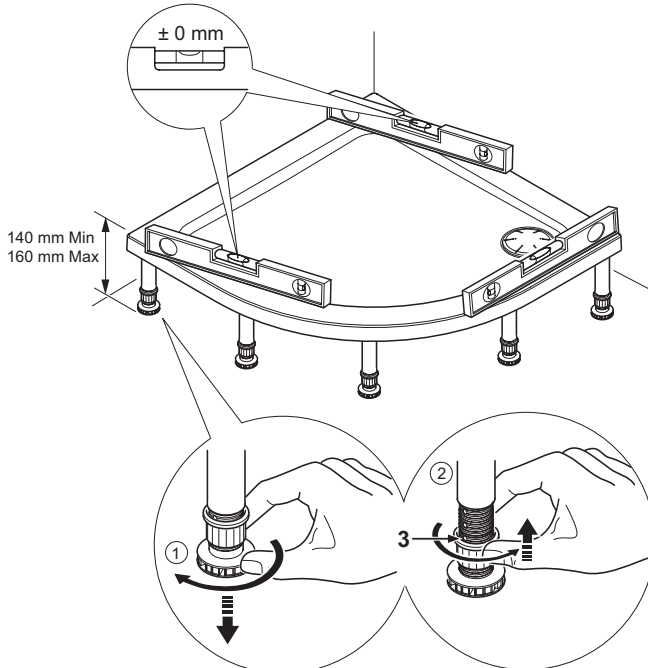
- a. Fit the panels in position and press firmly.
- b. Apply silicone sealant in accordance with the manufacturer's instructions to seal the edge of the panel to the shower tray.



1

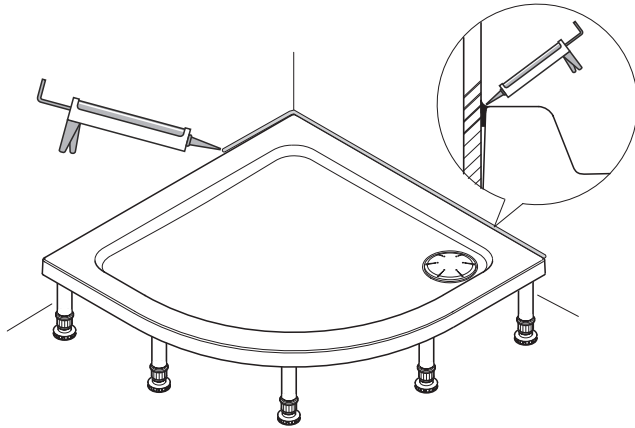


2



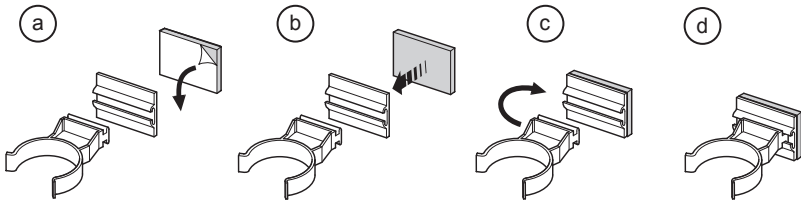
a. Make sure that the shower tray is level, adjust the legs as necessary.

3

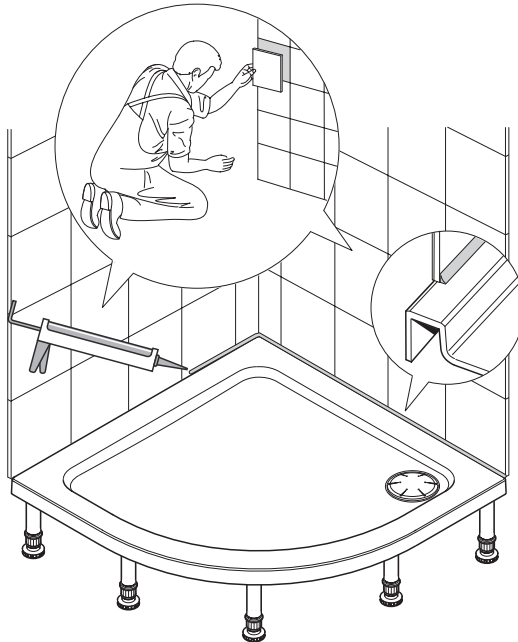


a. Apply silicone sealant in accordance with the manufacturer's instructions to seal the shower tray to the wall.

4

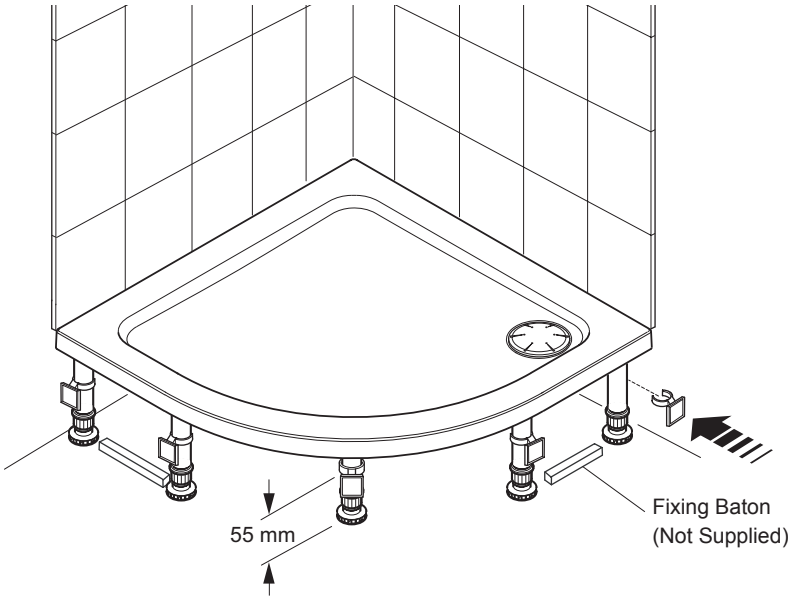


5



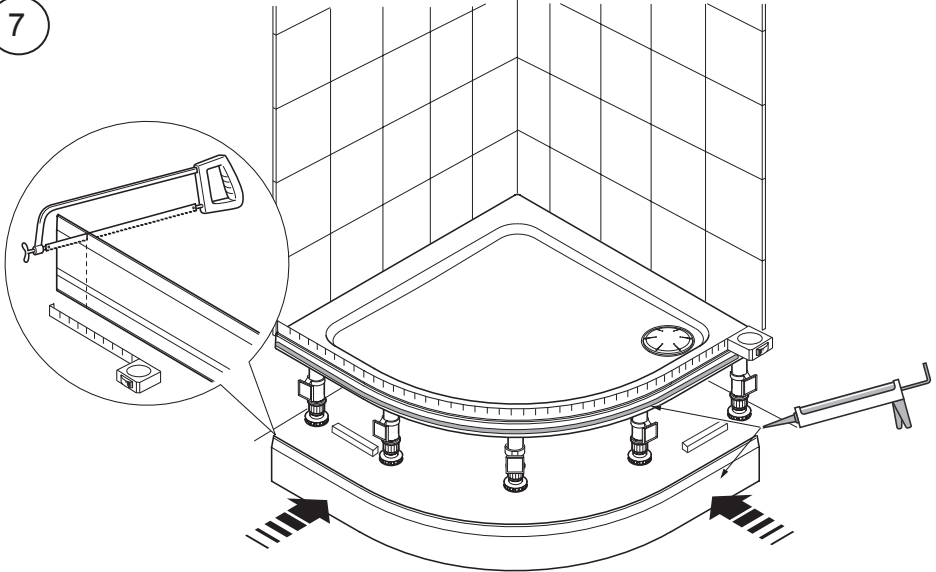
a. Tile the walls.
b. Apply silicone sealant in accordance with the manufacturer's instructions to seal the shower tray to the tiled wall surface.

6



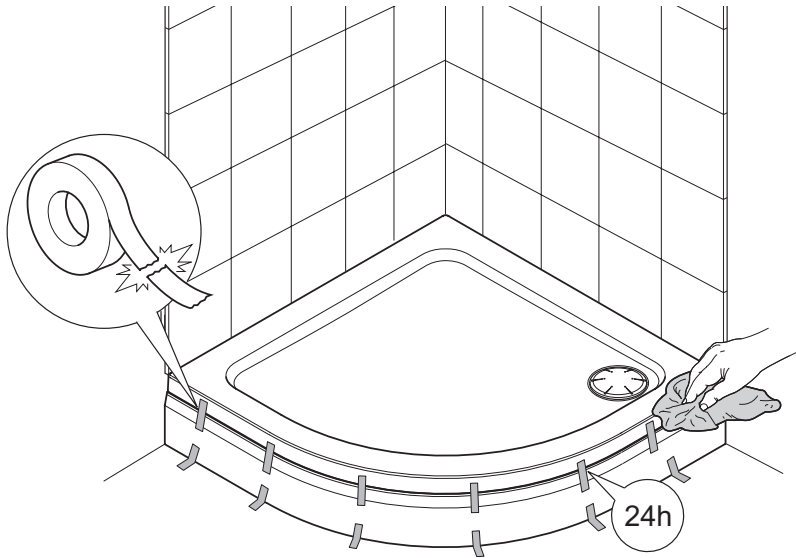
a. Fit the clips to the legs.

7



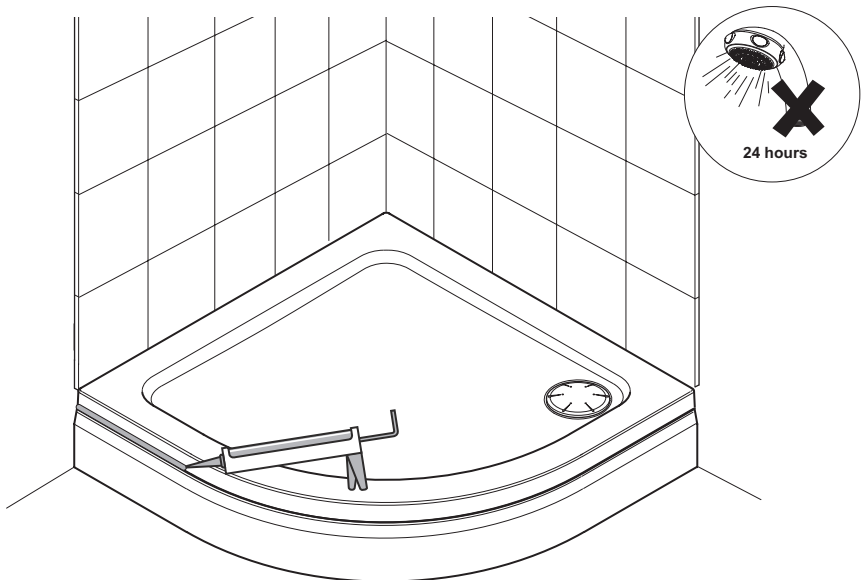
- a. Measure the length of panel required.
- b. Cut the panel to length.
- c. Apply a bead of silicone sealant in accordance with the manufacturer's instructions along the edge of the tray where the panel will seat.

8



- Fit the panel in position and press firmly.
- Apply masking tape or equivalent to hold the panel in position.
- Remove any excess silicone sealant with a cloth.
- Allow the silicone sealant to cure for 24 hours before removing the tape.

9



- Apply silicone sealant in accordance with the manufacturer's instructions to seal the edge of the panel to the shower tray.

MAINTENANCE

Cleaning

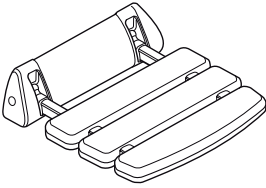
It is advised that the shower tray is cleaned immediately after use, to remove any insoluble products. Hot soapy water should be used and then the tray should be wiped. Cleaners of gritty or abrasive nature should **never** be used.

The acrylic surface of this shower tray has good resistance properties to acids but should not come into contact with alkalis or organic solvents, such as caustic soda, dry cleaning agents and paint strippers.

Regularly clean the waste to ensure correct operation.

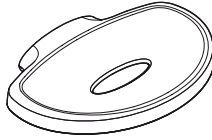
ACCESSORIES

Genuine Mira accessories can be purchased direct from Customers Services (our contact details can be found on the back cover of this guide) or from approved stockists or merchants.



Shower Seat
White - 2.1536.128
White/Chrome - 2.1536.129

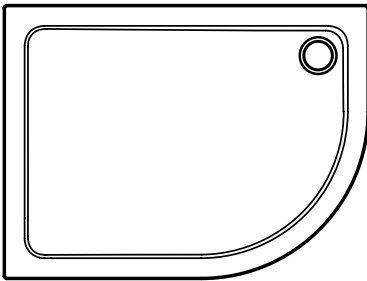
For use in or out of the showering area. **Note!** Must be installed onto a solid wall. Shower seat folds up when not in use



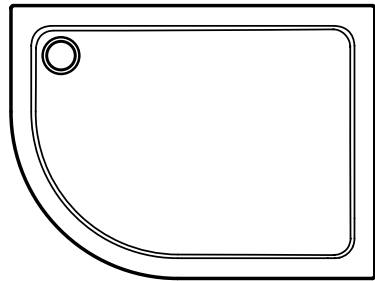
Wall Mounted Soap Dish
White - 1.1540.278
Chrome - 1.1540.279

Wall mounted for use anywhere in, or outside the showering area.

Handing Convention



Left Hand (LH)



Right Hand (RH)

CUSTOMER SERVICE

Guarantee

Your product has the benefit of our manufacturer's guarantee which starts from the date of purchase.

To activate this guarantee, please return your completed registration card, visit our website or free phone 0800 0731248 within 30 days of purchase (UK only).

Within the guarantee period we will resolve defects in materials or workmanship, free of charge, by repairing or replacing parts or product as we may choose.

This guarantee is in addition to your statutory rights and is subject to the following conditions:

- The product must be installed and maintained in accordance with the instructions given in this user guide.
- Servicing must only be undertaken by us or our appointed representative. **Note!** if a service visit is required the product must be fully installed and connected to services.
- Repair under this guarantee does not extend the original expiry date. The guarantee on any replacement parts or product ends at the original expiry date.
- For shower fittings or consumable items we reserve the right to supply replacement parts only.

The guarantee does not cover:

- Call out charges for non product faults (such as damage or performance issues arising from incorrect installation, improper use, lack of maintenance, build up of limescale, frost damage, corrosion, system debris or blocked filters) or where no fault has been found with the product.
- Water or electrical supply, waste and isolation issues.
- Compensation for loss of use of the product or consequential loss of any kind.
- Damage or defects caused if the product is repaired or modified by persons not authorised by us or our appointed representative.
- Routine maintenance or replacement parts to comply with the requirements of the TMV 2 or TMV 3 healthcare schemes.

What to do if something goes wrong

If your product does not function correctly when you first use it, contact your installer to check that it is installed and commissioned in accordance with the instructions in this manual.

Should this not resolve the issue, contact our Customer Services Team who will offer you or your installer advice and if applicable arrange for a Service Technician to call.

If the performance of your product declines, check in this manual to see if simple home maintenance is required. If you require further assistance call our Customer Services Team.

Extended Guarantees

A selection of protection plans are available that enable you to cover repair bills for the life of your policy (excludes Eire). Ring 01922 471763 for more details.

Helpdesk Service

Our dedicated Customer Services Team is comprehensively trained and can offer help and advice, spare parts, accessories or a service visit. We will need you to have your model name or number, power rating (if applicable) and date of purchase. As part of our quality and training programme calls may be recorded or monitored.

Mira Showers Website (www.mirashowers.co.uk)

From our website you can register your guarantee, download additional user guides, diagnose faults, purchase our full range of accessories and popular spares, refer to our FAQ's and request a service visit.

Spares and Accessories

We maintain extensive stocks of genuine spares and accessories and aim to provide support throughout the product's expected life. Payment can be made by phone at time of order using most major Credit or Debit cards and we aim to despatch orders within two working days. Items purchased from us are guaranteed for 12 months from date of purchase. For safety reasons spares exposed to mains voltages should only be fitted by competent persons.

Returns – items can be returned within one month of date of purchase, providing that they are in good condition and the packaging is unopened. Please obtain authorisation from our Customer Services Team before return. We reserve the right to apply a 15% restocking charge.

Service / Repairs

We have a nationwide team of Service Technicians who can carry out all service or repair work to your product within the guarantee period and beyond. You have the assurance of a fully trained Mira Technician, genuine Mira spare parts and a 12 month guarantee on any chargeable work done.

Payment should be made directly to the Service Technician who will accept most major Credit or Debit cards.

To Contact Us

UK

Telephone: 0844 571 5000

Mon to Fri 8:00 am - 5:30 pm, Sat 8:30 am - 3:30 pm

E-mail: technical@mirashowers.com

Fax: 01242 282595

By Post: Mira Customer Services Dept, Cromwell Road, Cheltenham, Gloucestershire, GL52 5EP

Eire

Telephone: 01 459 1344

Mon to Fri 9:00 am - 5:00 pm

E-mail: sales@modernplant.ie

Fax: Dublin 01 459 2329

By Post: Modern Plant Ltd (Dublin), Otter House, Naas Road, Clondalkin, Dublin 22

Mira is a registered trade mark of
Kohler Mira Limited.

The company reserves the right to alter
product specifications without notice.



mira
SHOWERS