

Door Chime

WIRED MP3 DOOR CHIME KIT

Model No.: DCW20

SIEMENS

Fitting Instructions

It is important to install this product in accordance with the fitting instructions below. Failure to do so may render your guarantee void.

- 1) Before commencing work, you will require a drill and cross-headed screwdriver.
 - 2) 2 x C size batteries
 - 3) Avoid positioning on UPVC Frames.
 - 4) Avoid positioning above heat sources such as radiators or in damp areas such as a kitchen or bathroom.
- Fixing screws and wall plugs are supplied with this kit.

This Wired MP3 Door Chime has 8 selectable pre-stored melodies and can be powered by 2 x 1.5volt alkaline batteries ("C", UM2 & R14 - not included).

There are two wiring terminals at the back of the door chime unit marked "B" - Wired Bell Push operation & "T" - Transformer/Wired Bell Push operation. Connect the cable as diagrams shown below.

IMPORTANT: Please make sure that 2 x C batteries are installed for both operations

Bare the twin bell wire approximately 8-10mm at both ends, ready to connect to your bell push and chime.

IMPORTANT: Before you drill any holes in the wall, please make sure there are not any cables or pipes that you may accidentally damage.

"B" - Wired Bell Push Operation

Connect the Wired Bell Push wires to terminal marked "B", simply use a flat screwdriver press the red colour switch down then insert the wires into the terminal, and release the red switch, the wire will be held firmly in it.

"T" - Transformer/Wired Bell Push operation

Connect the Wired Bell Push wires with the 8-10volt 1 amp Transformer as the diagram below.

Connect one wire from Transformer and one wire from the Wired Bell Push to the terminal marked "T", simply use a flat screwdriver press the red colour switch down then inserts the wire into the terminal, and release the red switch, the wire will be held firmly in it.

Important: Wired Lighted Bell Push can not be used with this door chime unit.

Battery Installation

This door chime is powered by the battery for both operations stated above.

1. Remove the battery cover from the back of the unit by sliding it away from the unit.
2. Insert 2 x 1.5volt alkaline batteries ("C", UM2 & R14 - not include) into the battery compartment, ensuring the battery polarity match the internal markings.
3. Close the battery door, then the chime unit is ready to use.

Installation:

It has a slotted hang hole on the back of the unit; this will enable the Chime unit to be hooked onto a screw and easily removed or relocated to another room. Drill a hole and a fit wall plug (if fixing to masonry) and screw (self-tapping 3 x 16mm screw) to fixing position. Leave a gap of 3mm between the screw head and the wall. Locate the keyhole slot on the back of the unit over the screw.

Adjust the volume

Press the + or - button on the back of the door chime unit to adjust the sound level.

Melody Selection

The selector is a small switch is located at the back of the Door Chime unit marked with "S". Press the switch to change to next melody of the 8 pre-stored:

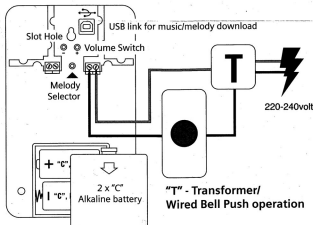
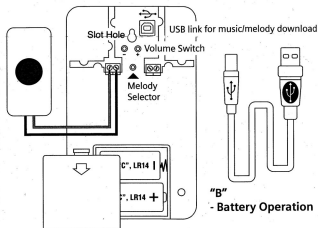
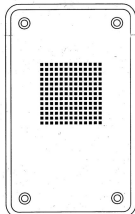
1. Westminster
2. Ding-Dong Repeat
3. Ding-Dong-Ding
4. Violin
5. Piano
6. Viola
7. Sax
8. Alarm Tone

Changing Melodies

Melodies can be changed using the USB link, chime and your computer. Connecting the USB will auto-run the melody program.

NB. If the program does not auto-run, select MY COMPUTER, CDROM.

Wired MP3 Door Chime



Playing a melody within the playlist on the computer

Click the melody that you want to play within the playlist.

Deleting an existing melody within the playlist

Select the melody that you want to delete within the playlist. Buttons "Play", "Stop" and "Delete" buttons will appear at the bottom of the Play List column. Click and then press the "Delete" button to delete the selected melody.

NOTE: If a melody is deleted then it is not retrievable.

Installing a new melody

Only 8 melodies can be stored at any one time. Before installing a new melody one of the existing sounds will require deleting from the playlist (see deleting above). To install a new file, double click any MP3 or WAV files from the "My Computer" column and melody will be displayed at the bottom of the screen.

Transfer the file by clicking the large "Green Arrow" button, the edited melody will be displayed on the playlist.

NB. You can have a maximum of 8 different melodies within the playlist to a total maximum file size of 8MB.

Editing melodies or songs

MP3 or WAV files may need to be reduced in size to create an appropriate chime melody. Double click any MP3 or WAV files from the "My Computer" column and melody will show within the "Music" column.

Hold the mouse left button at the start of the selected section and drag your mouse to the end of selected section, then release the left button. The bottom right corner of the sound wave bar will show the duration time of this section. You can play the selected section by pressing the play button on the bottom left corner of the sound wave bar.

NB. The melody duration time should ideally be 8-15 seconds.

Synchronize with Chime

The 8 melodies within the Playlist can be synchronized with the door chime by clicking the "SYNC" button. "Synchronize is finished" icon will display for confirmation. The chime has 8 MB memory to store the melodies/songs (approx. 8-9 minutes). The memory bar indicator at the bottom of the screen shows the percentage of memory in use.

Program supports: Windows 2K, XP, and Window 7.

Important

1. Wired Lighted Bell Push can not be used with this door chime unit.
2. Door Chime unit is designed for indoor use only.
3. Do not expose the door chime unit directly to rain or immerse in water.
4. Do not mount the door chime unit close to fireplace or expose to high temperature.
5. If leaving the chime for long periods, remove the battery from compartment to prevent leakage.
6. Dispose of old batteries in accordance with the relevant legislation.

User Hints

If the door chime unit does not sound, please check the following:

- a) Flat batteries in Door Chime units - change the batteries.
- b) Wrong battery polarity in Door Chime units - reinsert the batteries.
- c) Unable to store any music/melody to Play List Column - The Play List can only store total 8 melodies with max. 8 MB memory, so delete one or more melodies from the Play List to make room for the new music/melody.
- d) No melody/song stored in Door Chime unit - Synchronize your door chime before disconnect the USB cable.

Specification


Power : 2 x 1.5volt batteries ("C", UM2, R14 - not included)

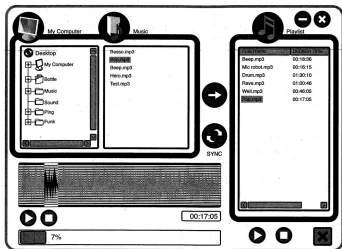
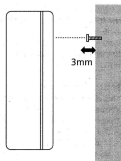
Operating Temperature : 0°C to +40°C

Selectable Tone : Total Eight (8) melodies available

Memory Size : 8 MB Memory



Symbol  indicating separate collection for electrical and electronic equipment



ELECTRUM SALES LIMITED, A Siemens Company.

Commercial Centre, Lakeside Plaza, Walkmill Lane, Bridgetown, Cannock, Staffordshire, WS11 0XE.

Telephone: 01543-455000

support@electrum.co.uk