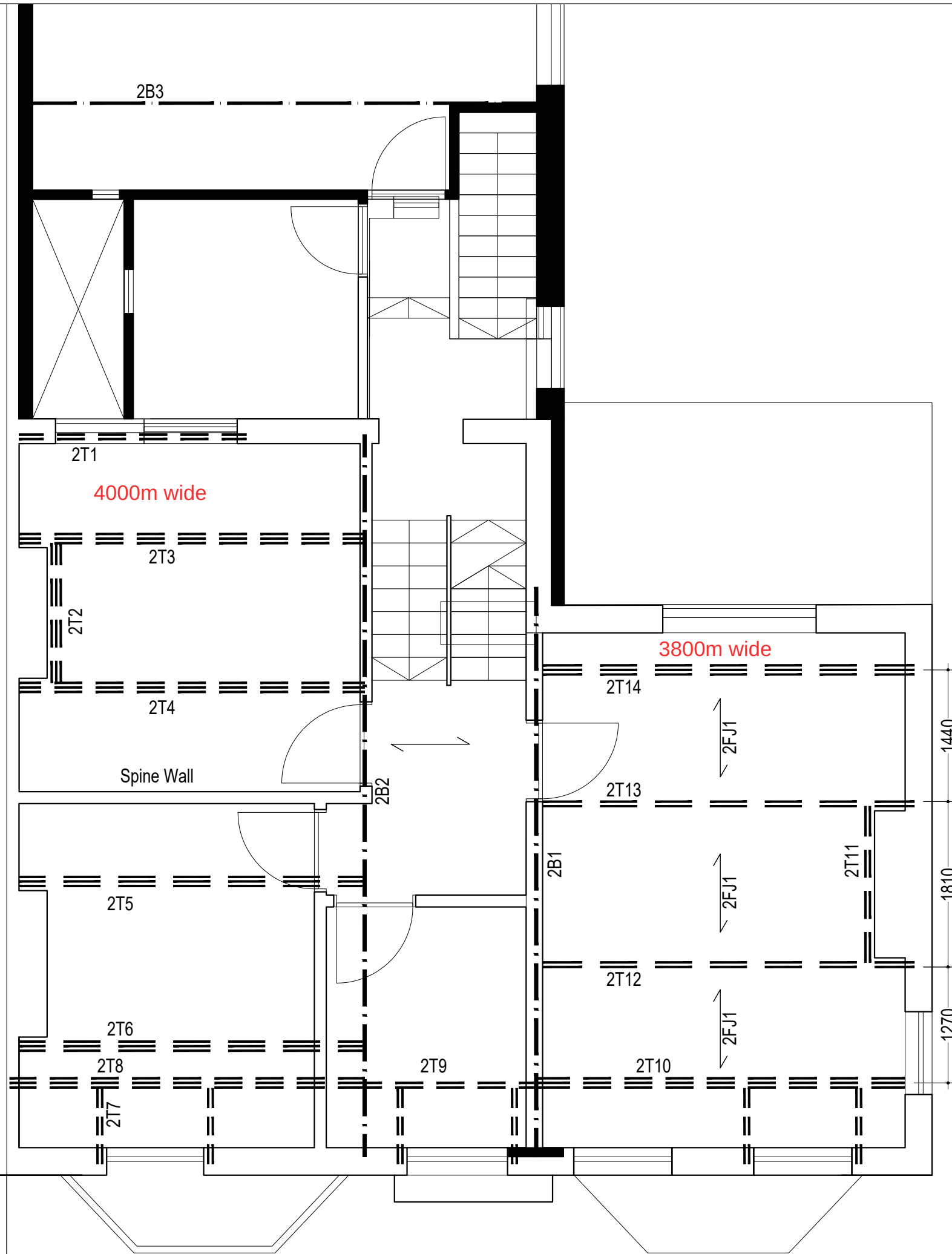


FIRST FLOOR PLAN

SR	NOTE	DESCRIPTION
1	Floor Joists	47 x 170 C24 @ 400 Crs
2	Trimmer 2T1	2 x 47 x 195 C24
3	Trimmer 2T2	2 x 47 x 195 C24
4	Trimmer 2T3	4 x 47 x 195 C24
5	Trimmer 2T4	4 x 47 x 195 C24
6	Trimmer 2T5	3 x 47 x 195 C24
7	Trimmer 2T6	3 x 47 x 195 C24
8	Trimmer 2T7	2 x 47 x 195 C24
9	Trimmer 2T8	3 x 47 x 195 C24
10	Trimmer 2T9	2 x 47 x 195 C24
11	Trimmer 2T10	3 x 47 x 195 C24
12	Trimmer 2T11	2 x 47 x 195 C24
13	Trimmer 2T12	4 x 47 x 195 C24
14	Trimmer 2T13	4 x 47 x 195 C24
15	Trimmer 2T14	4 x 47 x 195 C24
16	Beam 2B1	203 UC60
17	Spreader 1	450x215x220mm deep in-situ concrete padstone
18	Spreader 2	600x100x30mm thick MS Plate
19	Beam 2B2	203 UC86
20	Spreader 1	600x100x30mm thick MS Plate
21	Spreader 2	450x215x220mm deep in-situ concrete padstone
22	Flat Roof Rear	47 x 147 C24 @ 400 Crs
23	Beam 2B3	152 UC37
24	Spreader	500 x 100 x 20mm thick MS Plate
25		
26		



GENERAL NOTES

1. This drawing is to be read in conjunction with all relevant Architects, Engineers and Specialists drawings, together with all relevant documents.
2. DO NOT SCALE. Work to figured dimensions only. All dimensions, setting out and levels are to be verified on site with the Architect prior to the commencement of any site works.
3. All dimensions are to be verified on site prior to the commencement of any site works. Any variations are to be recorded and reported to the Engineer so that adjustments may be made to the structural scheme if necessary.
4. The Contractor shall be responsible for and must take all necessary precautions to ensure the stability of the existing structure and earthworks on adjoining sites during the course of the contract.
5. Materials and construction are to be in accordance with the relevant British Standards and Codes of Practice.
6. All steelwork to be Grade S355 in Accordance with B.S. Code for quality and workmanship to the approval of the Engineer. The steelwork contractor is to be responsible for providing site dimensions to enable fabrication. Details to be drawn for the engineers approval.
7. Steelwork is to be shot-blasted and primed with **ZINCPHOSPHATE PRIMER - 75 MICRONS** minimum.
8. No work would be carried out until plans and calculation have been approved by Local Authority.

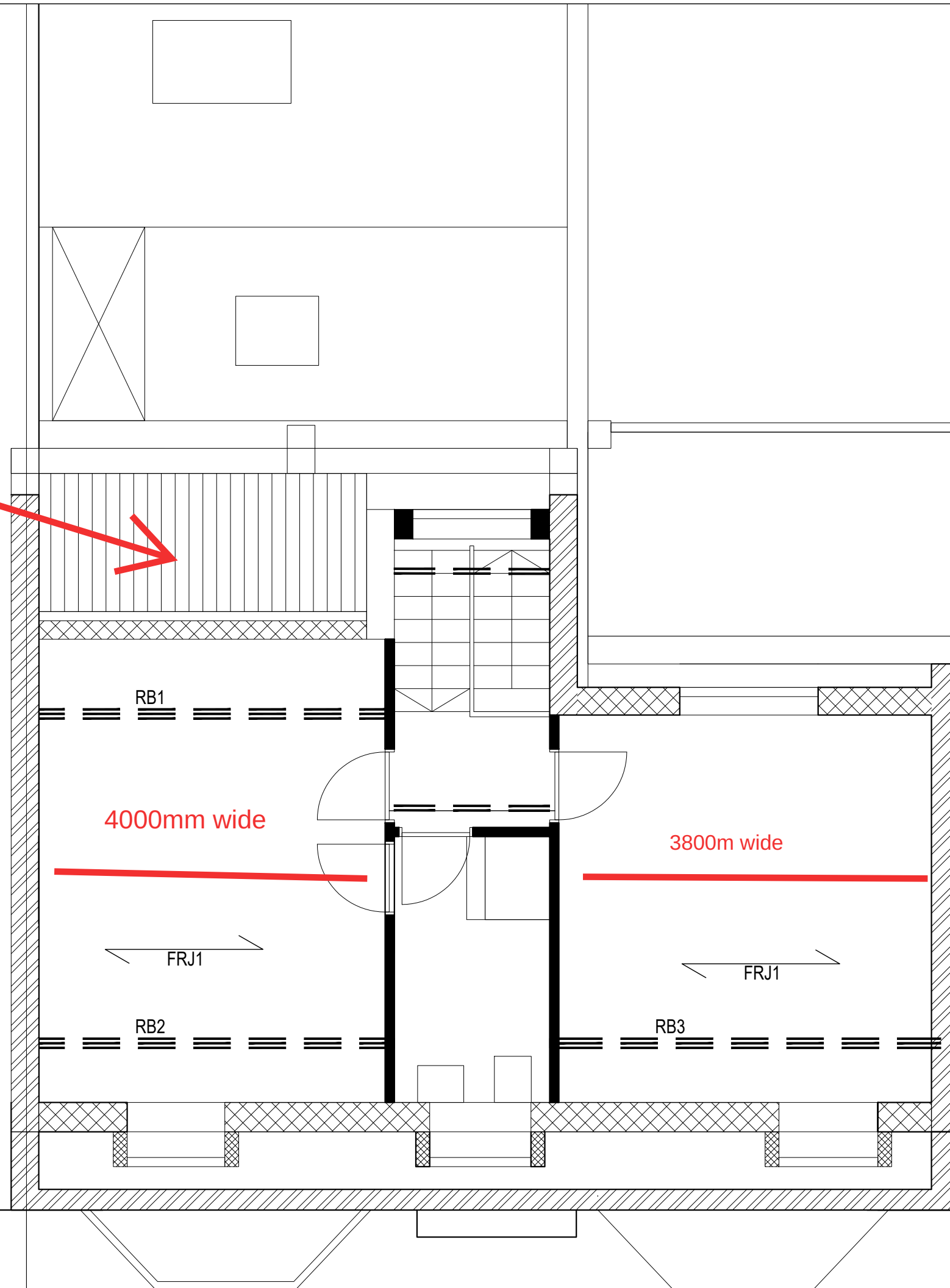
A:

REVISIONS Date

No balcony / terrace - just window opening instead

Insert text here

SECOND FLOOR PLAN		
SR	NOTE	DESCRIPTION
1	Mansard Flat Roof FRJ1	47 x 195 C24 @ 400 Crs
2	Side rafters RF1	47 x 147 C24 @ 400 Crs
3	Roof Beam RB1	3 x 47 x 195 C24
4	Roof Beam RB2	3 x 47 x 195 C24
5	Roof Beam RB3	3 x 47 x 195 C24
6	Struts	97 x 97 SW Post C24
7		



GENERAL NOTES

1. This drawing is to be read in conjunction with all relevant Architects, Engineers and Specialists drawings, together with all relevant documents.
2. DO NOT SCALE. Work to figured dimensions only. All dimensions, setting out and levels are to be verified on site with the Architect prior to the commencement of any site works.
3. All dimensions are to be verified on site prior to the commencement of any site works. Any variations are to be recorded and reported to the Engineer so that adjustments may be made to the structural scheme if necessary.
4. The Contractor shall be responsible for and must take all necessary precautions to ensure the stability of the existing structure and earthworks on adjoining sites during the course of the contract.
5. Materials and construction are to be in accordance with the relevant British Standards and Codes of Practice.
6. All steelwork to be Grade S355 in Accordance with B.S. Code for quality and workmanship to the approval of the Engineer. The steelwork contractor is to be responsible for providing site dimensions to enable fabrication. Details to be drawn for the engineers approval.
7. Steelwork is to be shot-blasted and primed with ZINCPHOSPHATE PRIMER - 75 MICRONS minimum.
8. No work would be carried out until plans and calculation have been approved by Local Authority.

A:

REVISIONS Date