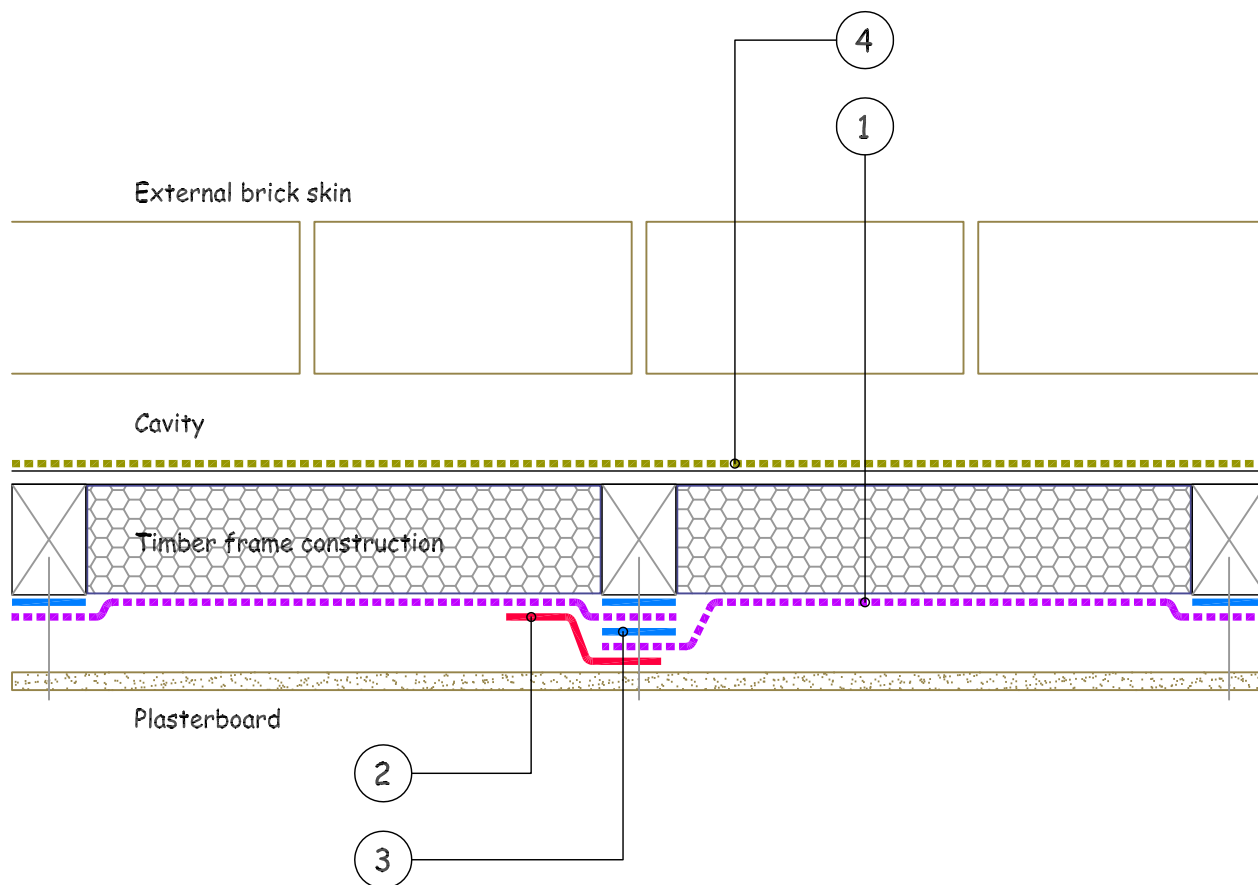


Detail Issued For Guidance Only,
Designer's Approval Required

Site construction sequencing should be assessed before the appropriate Visqueen Standard Detail is selected & approved by the Designer



CROSS SECTION

SHOWING VERTICAL JOINTS

KEY TO MATERIALS :

(Refer to Visqueen Technical Data for full detailed material specification).

- 1) VISQUEEN VAPOUR BARRIER (2m x 50m).
- 2) VISQUEEN VAPOUR TAPE (75mm x 15m).
- 3) VISQUEENPRO JOINTING TAPE (50mm x 10m).
- 4) BREATHER MEMBRANE BY OTHERS.

NB; DO NOT SCALE - USE FIGURED DIMENSIONS ONLY.



Visqueen Building Products

Contact Technical Support :

t : 0333 202 6800

f : 0333 202 6886

e : enquiries@visqueenbuilding.co.uk

www.visqueenbuilding.co.uk

Project: Timber Frame Standard Detail : Visqueen Vapour Barrier.

Drawing No.- VB-02.

Date.- 11/11.

Scale.- NTS.

© COPYRIGHT
RESERVED.