



# WATER BUTT PUMP

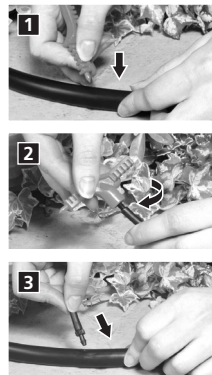
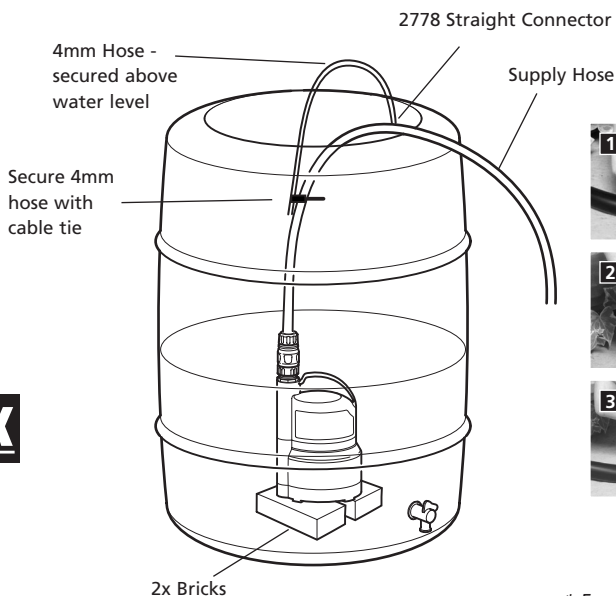
## Using the Hozelock Water Butt Pump with non-pressure compensating Micro Irrigation

The Hozelock Water Butt Pump is designed to operate all garden watering products.

If using the Water Butt Pump with non-pressure compensating Micro Irrigation or with other products that are permanently connected to the Water Butt Pump, an air gap must be installed to prevent siphoning from the water pump.

### Air Gap Installation

1. Pierce supply hose at its highest point above the water butt using a 2799 Hole Punch.
2. Connect a short length of 4mm Hose to a 2778 Straight Connector.
3. Press the 2778 Straight Connector into the supply hose.
4. Secure 4mm hose to the Supply Hose using cable tie or similar\*.



Hozelock Ltd.  
Midpoint Park,  
Birmingham B76 1AB.  
England

Tel: 0870 850 1959  
info@hazelock.com  
www.hazelock.com

33793-000

\* Ensure 4mm hose cannot be submerged below the water level